



# Construction Sector

**Workforce Investment San Francisco**  
**September 16, 2015**



**Presented By:**  
**Pat Mulligan**

# CityBuild's Construction Sector Strategy:

- **Assist in identifying career pathways and employment opportunities for San Francisco residents in the construction sector.**
- **Create training opportunities that assist with developing a qualified construction workforce.**
- **Assist contractors with meeting their labor needs.**



# CityBuild Service Model



# CityBuild Programs

- **Construction Administration & Professional Services Academy (CAPSA)**
  - 18 Week training and career development program
  - Training in QuickBooks, Microsoft Office, and basic accounting
  - Graduates receive referrals and placement support for employment
- **CityBuild Academy (CBA)**
  - 18 Week Pre-Apprenticeship Training
  - Hands-on training, CCSF Credit, instruction in construction trades
  - Graduates are indentured into local apprenticeship programs and are provided employment
  - Trainees receive certifications, including: OSHA 10, Forklift/Skid Steer, First Aid CPR, and Boom Lift



# CityBuild Governmental Partners

- San Francisco Board of Supervisors
- City College of San Francisco
- San Francisco Unified School District
- San Francisco Public Utilities Commission
- San Francisco Municipal Transit Authority
- San Francisco International Airport
- Office of Community Investment and Infrastructure
- Port of San Francisco
- San Francisco County Transportation Authority
- Mayor's Office of Housing and Community Development
- San Francisco District Attorney's Office
- San Francisco Fire Department
- Adult Probation



San Francisco  
**Water  
Power  
Sewer**

Services of the San Francisco Public Utilities Commission



Moving Forward Together



San Francisco  
International  
Airport





# CityBuild Community Partners

- Mission Hiring Hall
- Charity Cultural Services Center
- A. Philip Randolph Institute
- Young Community Developers
- Anders & Anders Foundation
- Asian Neighborhood Design



# CAPSA

## CAPSA is

- An 18 week workforce program administered by Mission Hiring Hall (MHH) through its partnership with OEWD and City College of San Francisco (CCSF)
- Provides individuals with the training and support to begin administrative and professional careers in construction
- Operated out of CCSF's Mission Campus

## CAPSA began...

- In 2009 and has trained over 200 administrative professionals over the course of 12 cycles

## CAPSA Offers...

- Participants an opportunity to either directly enter the workforce or continue pursuing a degree in Construction Management



# CAPSA

## Program Requirements:

- **San Francisco resident (proof required)**
- **Minimum 1 year of administrative experience**
- **CCSF Matriculation** or current transcript
- **Advanced computer proficiency**
- **Current CA I.D.**
- **25 WPM Typing Speed**
- **Current Resume**





# CAPSA Training

## Curriculum

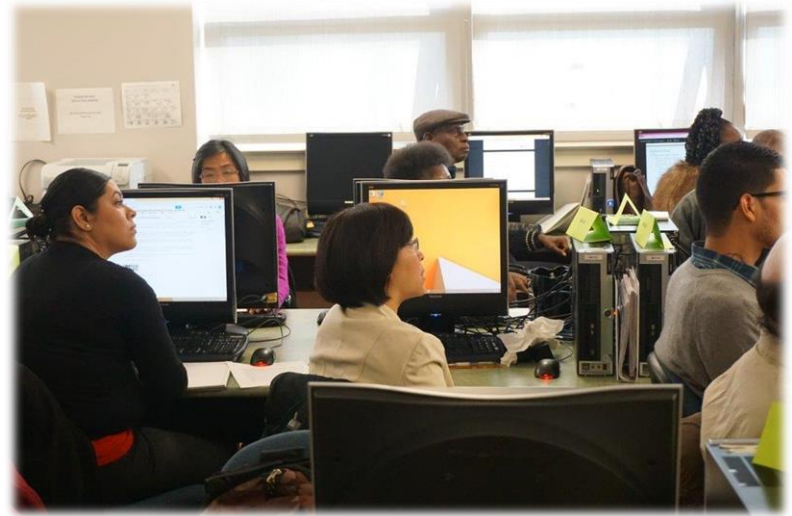
- Microsoft Office, QuickBooks, construction terminology, cost estimating, scheduling, contracts, managing construction process, and construction graphics

## Career Paths

- Office Administrator, Project Assistant, Project Engineer, Executive Assistant, Document Control Specialist, and AutoCAD Drafter

## Employer Partnership

- HerreroBoldt, Swinerton Builders, Webcor Builders, DPR, Kent Lim and Co., Consolidated Engineering Laboratories, and Marelich Mechanical



# CityBuild Academy

## The CityBuild Academy is

- 18-week pre-apprenticeship program featuring hands-on training and academic courses
- A construction vocational skills training program which offers trainees the opportunity to earn up to 15 college credits through City College of San Francisco (CCSF)
- A partnership between OEWD, CCSF, local CBOs, trade unions, local apprenticeship programs, and construction employers
- Three different cycles throughout the year



# CityBuild Academy

## Program Requirements

- **San Francisco Resident** (proof required)
- **18 years** of age or over
- **High School Diploma or GED**
- **Valid Driver's License**
- Ability to communicate effectively in **English**
  - Vocational English Classes offered for those in need
- Ability to lift **70lbs**
- Successfully **pass a drug test**
- Complete pre-CBA **Job Qualifying Training**





# CityBuild Academy

## Curriculum

- Blueprint Reading
- Energy Efficiency and Green Building Technology
- Trench Safety and Excavation
- Wood Shop
- General carpentry
- Concrete and Plastering instruction
- Labor Studies
- Math
- English
- Vocational English Second Language (VESL)



# CityBuild Academy

## Certifications

- Neighborhood Emergency Response Training (NERT)
- CPR and First Aid
- Confined Space Training
- Rigging certification
- OSHA 10
- HAZWOPER
- Hilt
- Forklift
- Scissor lift
- Skid Steer
- Welding
- Fall Protection
- Aerial Lift





# Industry Partnerships and Modular Trainings

- **Northern California Carpenters Training Committee:** curriculum and direct entry agreement
- **Bay Area Plastering Joint Apprenticeship Training Committee (JATC):** advanced apprenticeship placement and instruction
  - Specialized trainings in the evenings



# Industry Partnerships and Modular Trainings

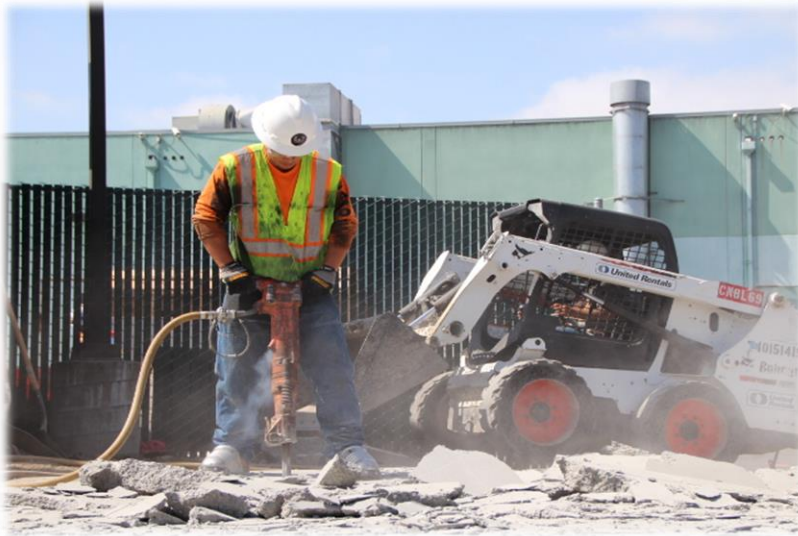
- **District Council #16 Painters and Allied Trades Apprenticeship:** curriculum and instruction
  - Painting, Floor Covering, Drywall, and Glazing
- **Bay Area Sheet Metal Joint Apprenticeship Committee:** provide instruction and demonstrations
  - Exam preparation
- **Field Ironworkers Apprenticeship & Training Program:** provide instruction and external training
  - Rebar installation; welding plug certificate





# Laborers

- Academy Lead Instructor provided by Northern California Laborers' Apprenticeship Training Committee
- Provides core curriculum
- Tunnel Training
- Direct Entry Agreement
- Involved in early screening of applicants and job qualifying review



# Cement Masons

- Union Representative provides concrete placement instruction
- Specialized training on the weekends and two evenings during the week
- Direct entry agreement
- Involved in early screening of applicants and job qualifying review





# Webcor Builders

- Provide materials for active concrete pours
- Donate sophisticated concrete shoring systems
- Top Employer of CityBuild Academy Graduates

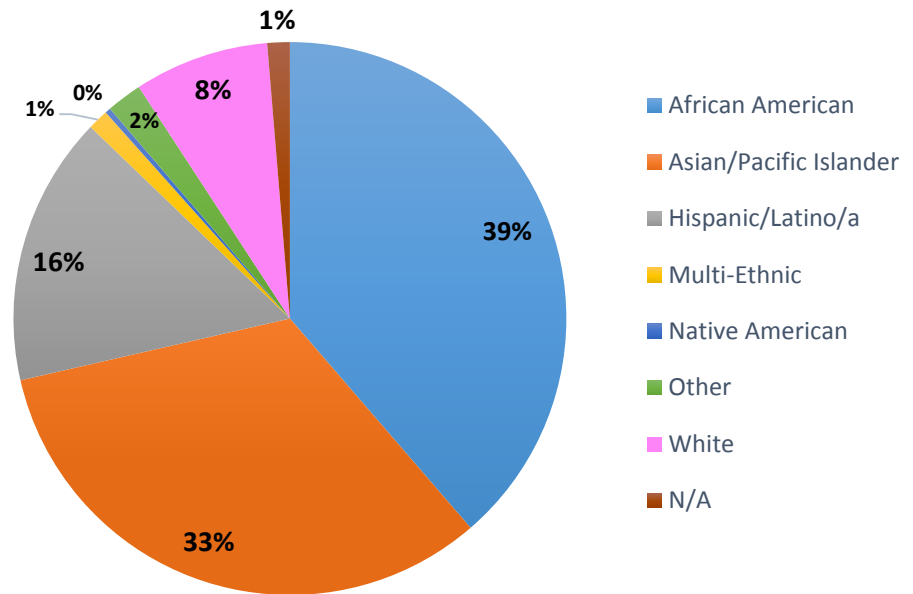




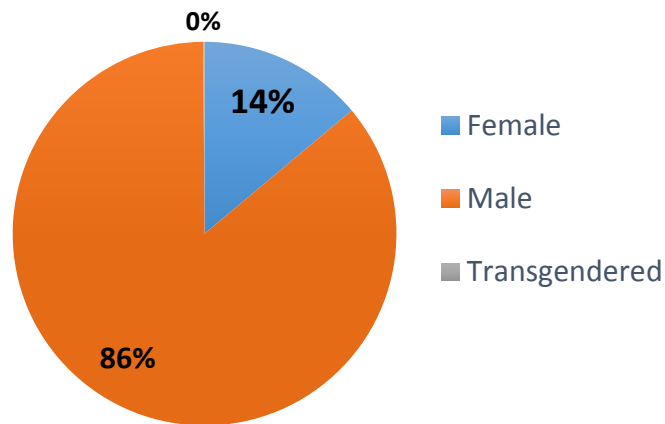
# CityBuild Academy

## Cycles 1-20

Race/Ethnicity



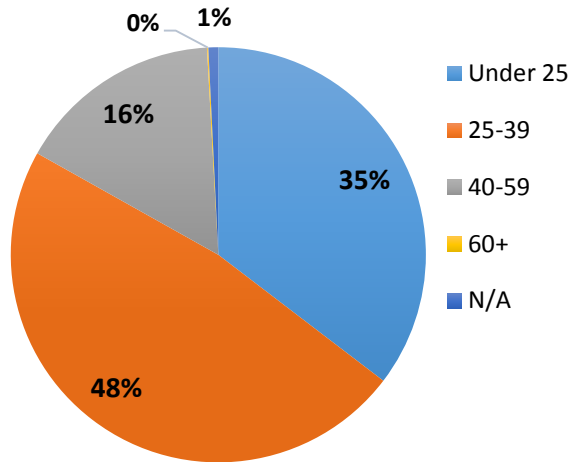
Gender



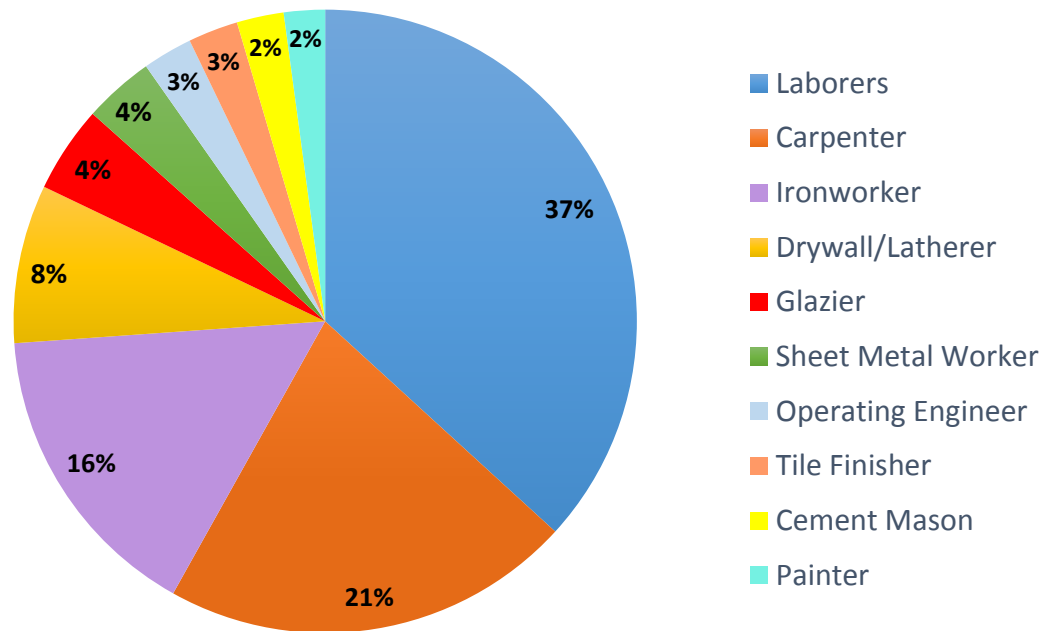
# CityBuild Academy

## Cycles 1-20

### Age When Enrolled in CBA



### Top 10 Trades for Placement



# Questions?



# THANK YOU!

