

An aerial, grayscale photograph of San Francisco, showing a dense urban landscape with numerous skyscrapers and buildings. The Golden Gate Bridge is visible in the distance. A large red rectangular box is overlaid on the center of the image, containing white text.

Workforce Investment San Francisco Board Meeting



September 13, 2017



Director's Report Michael Carr, Director of Workforce



September 13, 2017



Public and Private Partnerships: Sutter Health – CPMC and Sector Program Spotlight

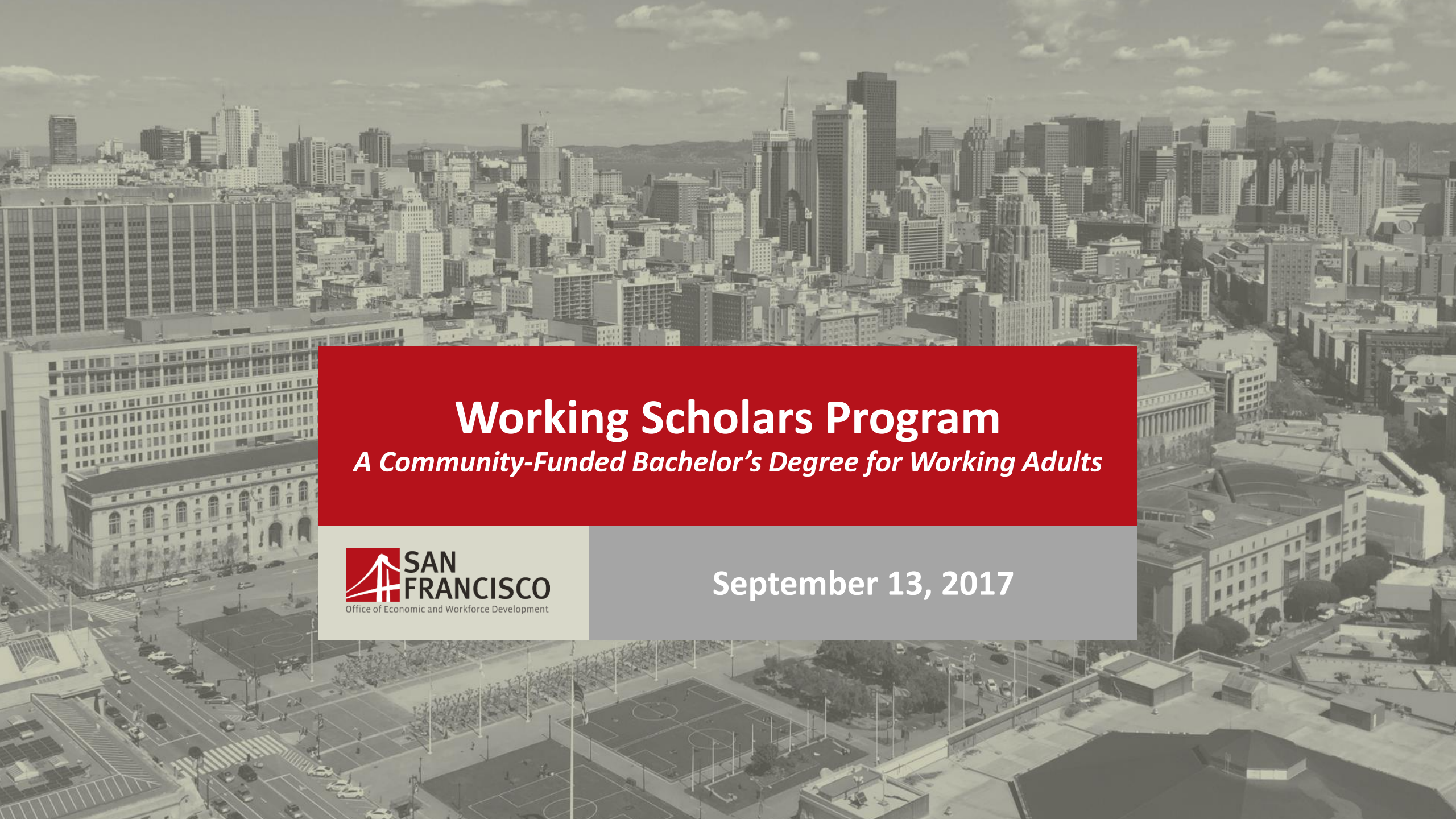


September 13, 2017

Panelists

- **Alisha Powell**, *City Build Construction Academy Graduate; Carpenter Apprentice, HerreroBoldt*
- **Elba Ruiz Ochomogo**, *Construction Administration & Professional Services Academy Graduate; Accounting Clerk, HerreroBoldt*
- **Yvonne Rosas**, *Health Care Academy Medical Assistant Refresher Graduate; Medical Assistant, California Pacific Medical Center*
- **Silvia Gutierrez**, *Administrative Supervisor, Pediatric After Hours, California Pacific Medical Center*
- **Miquel Penn**, *Manager of Workforce Development and Public Relations, HerreroBoldt*

Moderator: **Janan Howell**, *Director of Sector and Workforce Initiatives*



Working Scholars Program

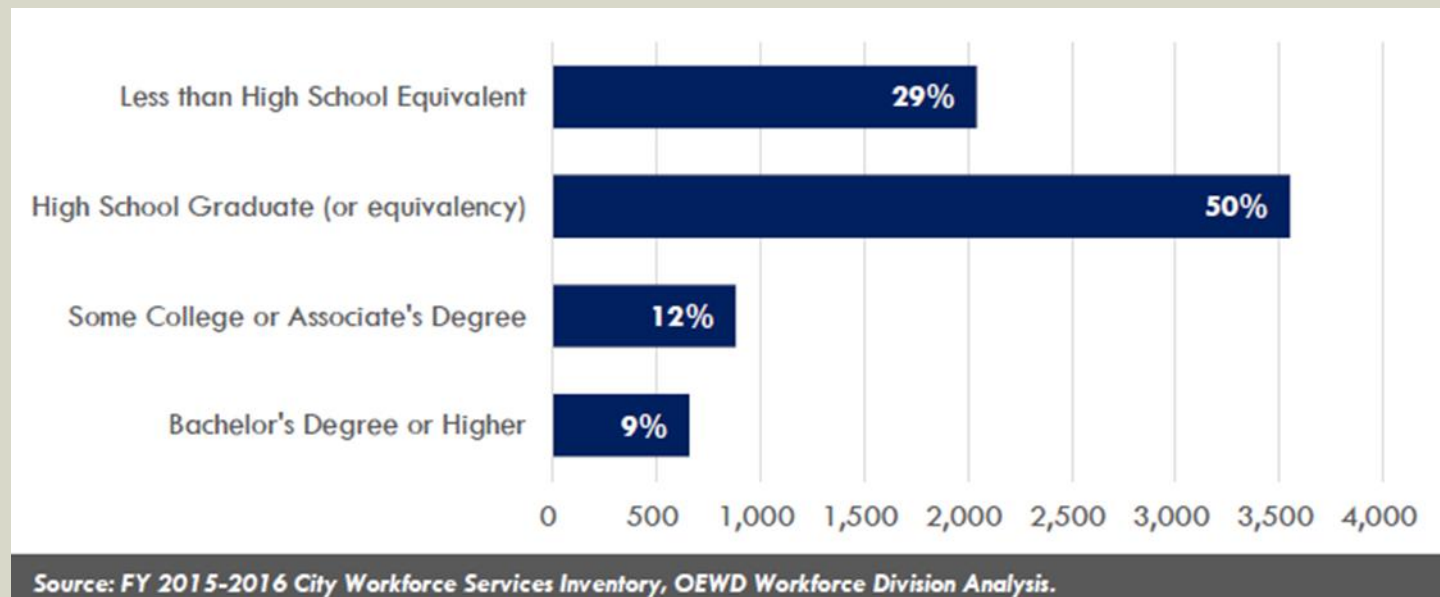
A Community-Funded Bachelor's Degree for Working Adults



September 13, 2017

Education and Livable Wage in San Francisco

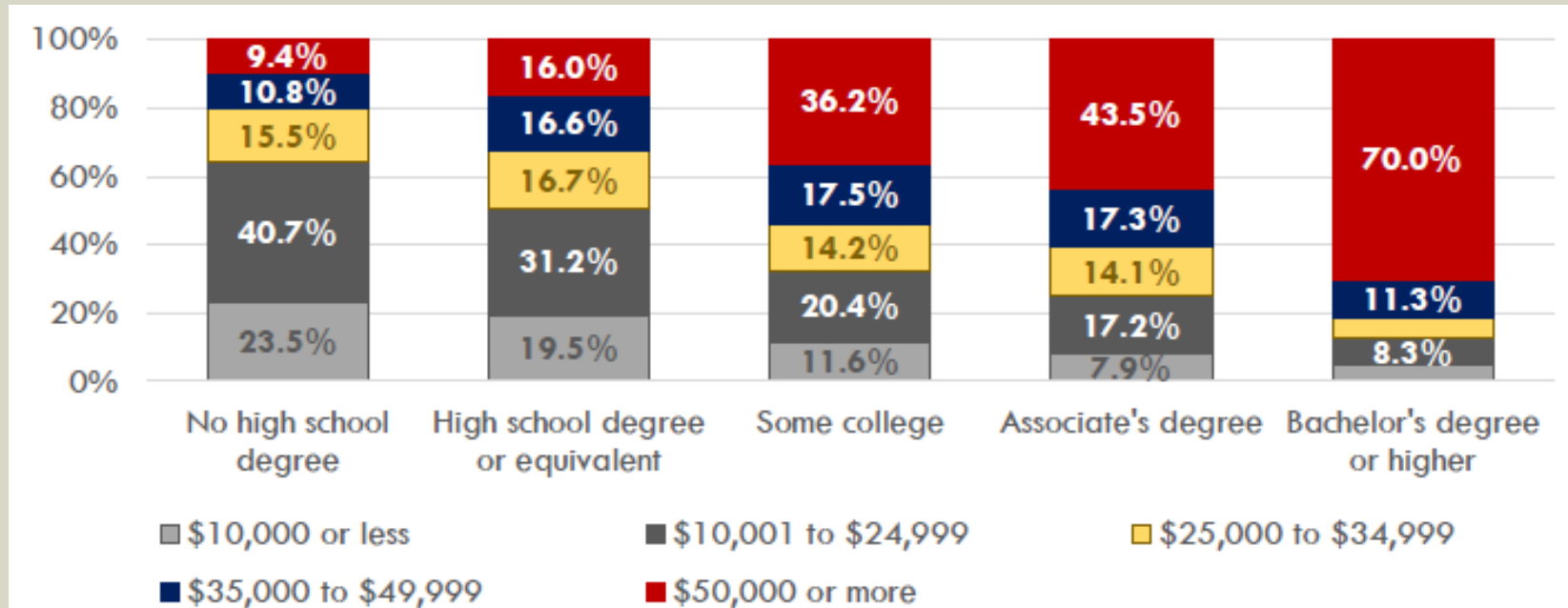
- Self-sufficiency standard in San Francisco is \$73,167 annually. For one adult, the standard is \$33,082.
- Only 33% of those with a high school degree or less earn the self-sufficiency standard.
- Of the clients served by OEWD in FY 2015-16, 74% had a high school education or less, and 93% earned less than \$37,700 annually



Educational Attainment in San Francisco

- ~48,000 local labor force participants lack a high school degree
- 65,000 have a high school degree
- 76,000 have some college but no degree
- 27,000 have an Associate's degree
- 342,000 have a Bachelor's degree or higher

Income by Educational Attainment

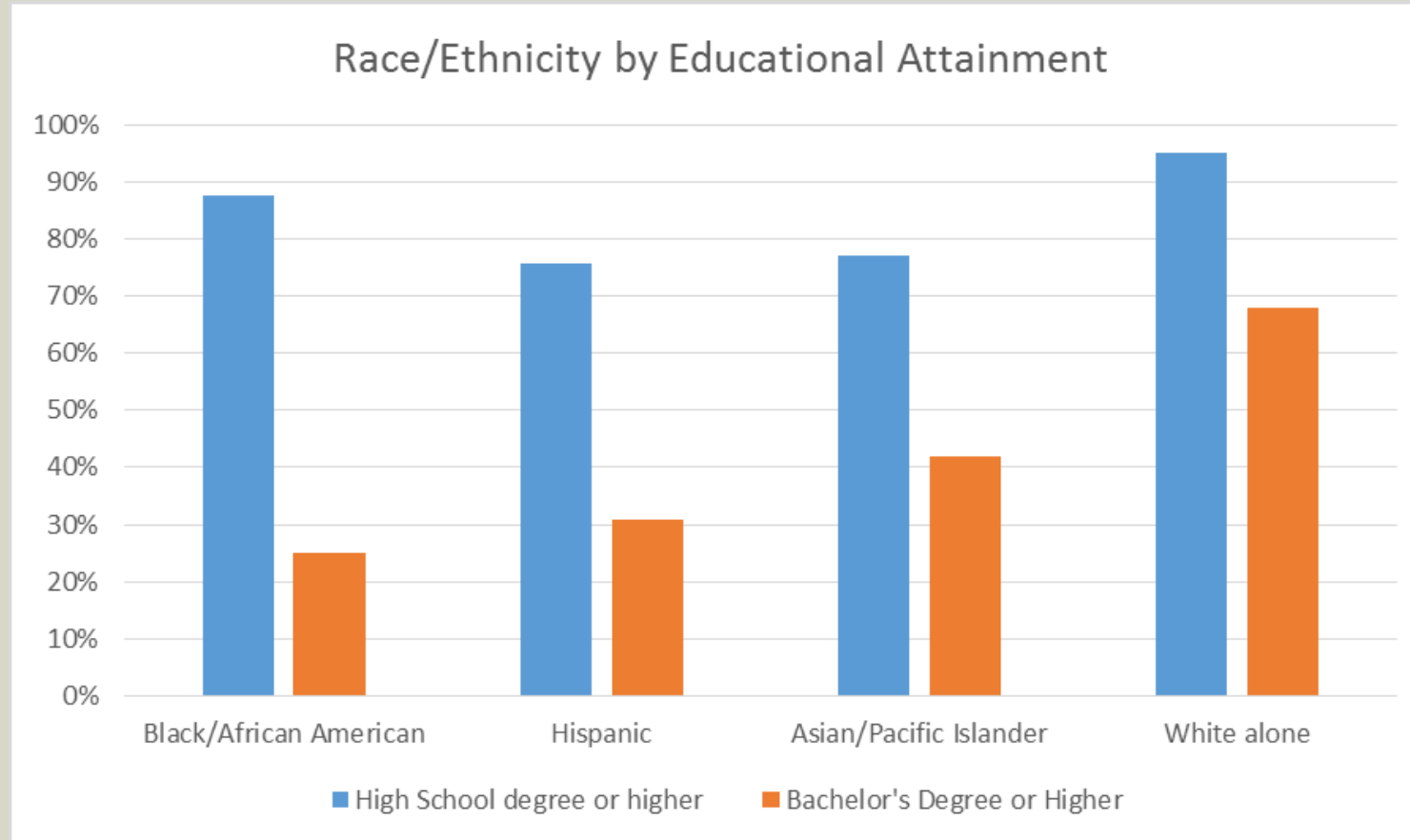


Source: U.S. Census Bureau, 2010-2014 American Community Survey PUMS, OEWD Workforce Division Analysis.

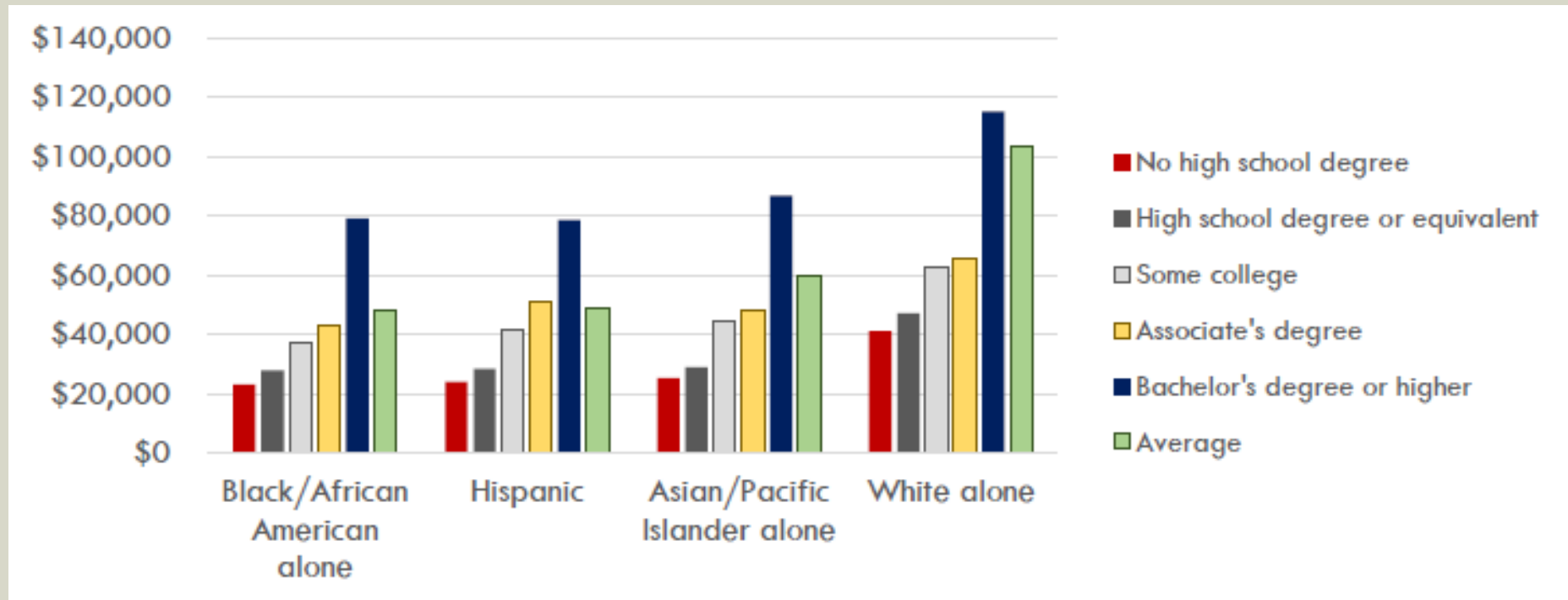
Sample: San Francisco residents who were labor force participants (employed or unemployed) at the time of the survey and not currently enrolled in school. All data are limited to the non-institutionalized civilian population, age 16 and above.

81% of residents with a Bachelor's degree or higher earn a livable wage.

Race/Ethnicity by Educational Attainment



Income by Race/Ethnicity



Source: U.S. Census Bureau, 2010-2014 American Community Survey PUMS, OEWD Workforce Division Analysis.

Increased Access to Higher Education

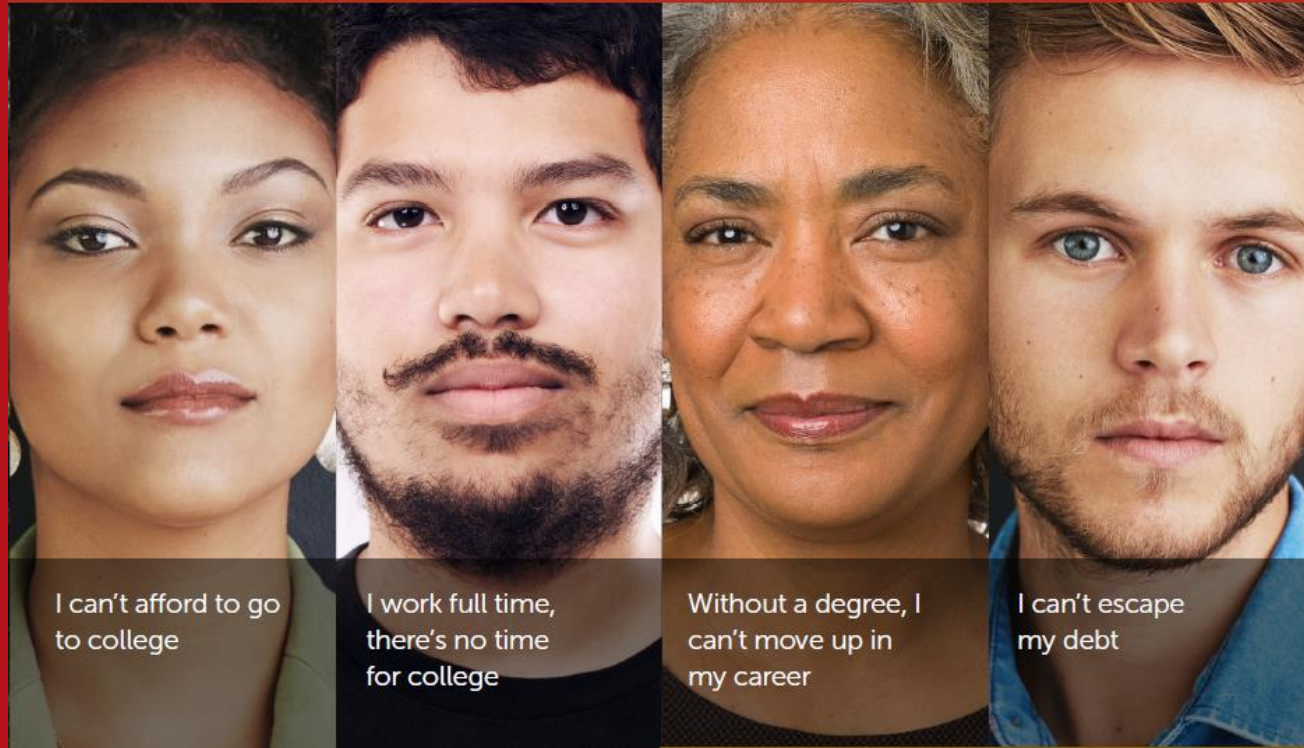
- Higher paying jobs
- Career advancement
- More qualified and viable candidates available locally for growing sectors





Community funded Bachelor's degree
For working adults

Why Working Scholars?



I can't afford to go to college

I work full time, there's no time for college

Without a degree, I can't move up in my career

I can't escape my debt

What is Working Scholars?

A mobile first higher education pathway that allows hard working individuals to obtain a college degree at the speed of their busy lives.





TRADITIONAL

BA 120 units
4+ years
Lecture + Homework + Books
Synchronous Fixed Schedule
40+ hours per week
Average Cost \$60,000

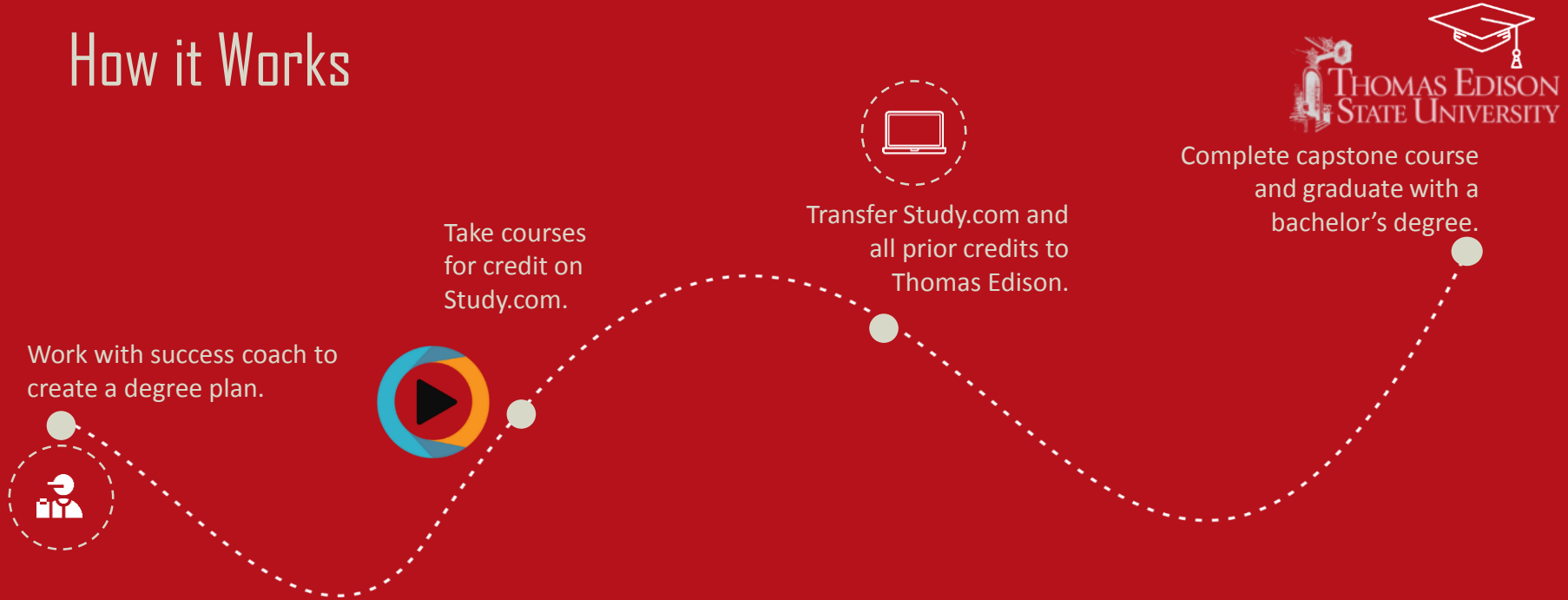


WORKING SCHOLARS

BA 120 units
1-4 years
5 minute video lessons
Self-paced with 24/7 Access
5+ hours per week
Average Cost \$6,500*

* This cost is covered by municipality and corporate philanthropy with no cost being passed along to student

How it Works



Work with success coach to create a degree plan.



Take courses for credit on Study.com.



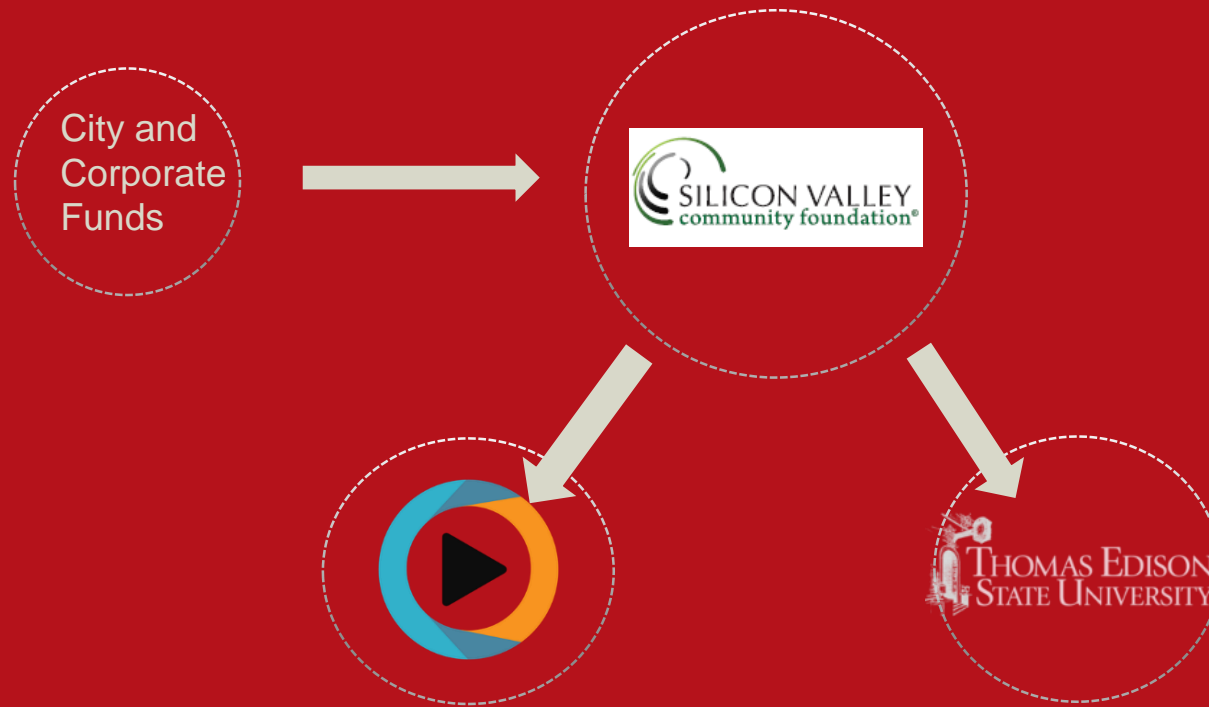
Transfer Study.com and all prior credits to Thomas Edison.



Complete capstone course and graduate with a bachelor's degree.



Working Scholars Funding Flow



Where is Working Scholars?

- **Mountain View** – launched in 10/16 as Study.com philanthropic initiative
- **Gilroy** – launched in 6/17 by Gilroy Chamber of Commerce
- **East Palo Alto** – launched in 9/17 by EPA City Council
- **Sunnyvale** – Launch date set for 10/12/17 (Funded by the City of Sunnyvale in partnership with local corporate philanthropy)
- **Los Altos** – Slated to launch 11/17 (funded by LACF)
- **Oakland** – Working with city officials to embed inside Oakland's Promise

Proposed Pilot for San Francisco Working Scholars

- Partnership between OEWD Workforce and Human Services Agency (HSA)
- Pilot Working Scholars with 10-25 Public Service Trainees in the HSA career pathways program
- Provide participants with support through OEWD and HSA programs to ensure participant engagement and success
- Assuming the pilot goes well, the City of San Francisco and Working Scholars would potentially open the opportunity up to clients in the Workforce system.

Questions?



WISF Board Member Profile



September 13, 2017

Kevin Carroll

Executive Director
Hotel Council

- My Background
- What I Value About WISF Board Membership
- Opportunities for Collaboration

