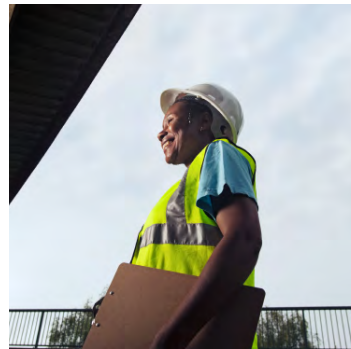
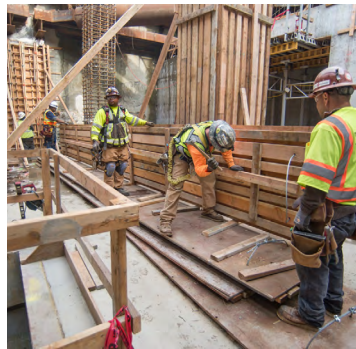


2022

THE SAN FRANCISCO **LOCAL HIRING POLICY FOR CONSTRUCTION**



Annual Report

CONTENTS

LETTER FROM THE MAYOR	02
ABOUT OEWD	04
EXECUTIVE SUMMARY	06
SUMMARY DATA	09
DEMOGRAPHIC DATA	10
CHALLENGES & RECOMMENDATIONS	12
CITYBUILD	14
WORK HOURS BY DEPARTMENT	16
WORK HOURS BY LOCALITY	75
ACKNOWLEDGEMENTS	79

2022

Letter from the Mayor

On behalf of the City and County of San Francisco, I am pleased to present the 2022 Annual Report for the San Francisco Local Hiring Policy for Construction.

San Francisco is a city where hope and opportunity grow out of hard work, and as we recover from the COVID-19 pandemic, I remain committed to strengthening our local workforce. Construction in this city is one of the sectors that will continue to help revitalize our economy and provide equitable employment for our residents during a time when getting people back to work is critical.

As we look beyond the pandemic, we must ensure that every San Franciscan has the chance to be a part of our growing construction industry. At the celebration of CityBuild Academy’s 15th anniversary last September, I announced that we are expanding the program to train twice as many people to get meaningful and well-paying jobs. These opportunities provide our workforce with the skills necessary to succeed and thrive in our city, which is exactly what the Local Hiring Policy was designed to do.





The Local Hiring Policy continues to create access to livable wages and long-lasting careers, even during these challenging times.

The Local Hiring Policy continues to create access to livable wages and long-lasting careers, even during these challenging times. In 2021, while we experienced a reduction in construction work hours from previous years, we still exceeded our local hiring requirements. I look forward to building on this progress because we know that an expanded workforce will help us build a more resilient and vibrant city.

I want to thank our contractor partners, building trade unions, community-based organizations, and City departments for their continued support. Their work is at the core of the Local Hiring Policy's success, and together, we are able to provide more jobs and create opportunities for generations to come.

Sincerely,

London Breed

Mayor, City and County of San Francisco



Mayor London N. Breed

45th Mayor of San Francisco

About

OEWD

“

**Promoting growth
and prosperity for
all San Franciscans**

Our Mission

—
The Office of Economic and Workforce Development is charged with administration of the Local Hiring Policy and is responsible for producing this Annual Report.

The mission of the Office of Economic and Workforce Development (OEWD) is to advance equitable and shared prosperity for San Franciscans by growing sustainable jobs, supporting business of all sizes, creating great places to live and work, and helping everyone achieve economic self-sufficiency.

OEWD's programs are responsible for strengthening San Francisco's many diverse neighborhood and commercial corridors, creating a business climate where companies can grow and prosper, and ensuring a continually high quality of life for all San Franciscans. These efforts are critical to rebuilding a more equitable economy as we recover from the impacts of the COVID-19 pandemic.

OEWD's Workforce Development Division coordinates the San Francisco Workforce Development System, which is a network of public, private, and nonprofit service providers that serve San Francisco job seekers and employers. Workforce Development connects job seekers in San Francisco

with employment opportunities in growing industries such as Technology, Health Care, Hospitality, and Construction. The Workforce Development Division provides industry aligned job training and access to job search assistance at community-based neighborhood job centers throughout the City, to help provide employers with skilled workers.

The Office of Economic and Workforce Development is charged with administration of the Local Hiring Policy and is responsible for producing this Annual Report. OEWD's Construction program is administered by CityBuild and its team of Employment Liaisons and Compliance Officers.

About the Local Hiring Policy

In December of 2010, the San Francisco Board of Supervisors approved amendments to Chapter 6.22(g) of the San Francisco Administrative Code, adopting the San Francisco Local Hiring Policy for Construction ("Policy"). The Policy was implemented on March 25, 2011 and is recognized as one of the strongest pieces of legislation in the country to promote the utilization of resident-hiring on locally sponsored projects.

In the Policy's first year, the mandatory local hiring requirement was 20% by trade. The local hiring requirement increased by 5% each of the subsequent two years on March 25th. In its third year, after the local hiring requirement increased to 30% by trade as scheduled, the Policy entered an extended legislative review period. Subsequently, local workforce data provided in the 2013-2014 annual report was evaluated and Policy recommendations for legislative consideration were adopted by the San Francisco Board of Supervisors.

On March 14, 2017, the San Francisco Board of Supervisors voted in favor of amending the Local Hiring Policy to permanently set the mandatory participation level at 30% by trade. The local resident apprenticeship requirement has remained unchanged at 50%.

With multiple amendments to the Policy since its implementation, the Board of Supervisors approved the movement of the Local Hiring Policy from Chapter 6 of the San Francisco Administrative Code into Chapter 82 in March 2017. The Board of Supervisors amended the Policy to extend local hiring onto privately-funded projects on City-owned property. The Policy was expanded to cover new developments, tenant improvement work, temporary construction associated with special events, and work performed on real property leased or sold by the City for housing development.

Executive Summary

While construction remains one of the most critical industries in San Francisco, the last two years have shown us that no sector is immune to the effects of a global pandemic. The construction industry saw a significant decline in capital improvements and developments due to funding challenges, new health and safety protocols, project shutdowns, supply chain disruptions and abrupt changes in project scope. While construction was considered an essential business in San Francisco, the local market saw a 35% reduction in work hours on capital improvement projects from 2020 to 2021. Yet, despite these unprecedented challenges, the data in this report indicates that the Local Hiring Policy is effective in ensuring employment opportunities for local workers, who contributed 35% of the total work hours on public works projects, up from 32% the year prior.



CityBuild celebrated its 15th anniversary on September 1, 2021 ([click to watch video](#))

As San Francisco emerges from the pandemic and focuses on economic recovery, priorities for the City include building affordable housing and investing in our critical infrastructure, creating tens of thousands of construction jobs and training opportunities for local residents. New data for this year will include nearly one million work hours on housing projects covered under the Policy, which subjects most privately-funded developments on City-owned property to a 30% requirement for both total and apprentice hours. With COVID safety restrictions being lifted, the future of construction is promising. Robust activity on developments such as Mission Rock, Pier 70 and Potrero Power Station, coupled with the expansion of CityBuild training programs, ensure that local residents are well-supported for careers in construction. The Local Hiring Policy will continue to support local workers maintain meaningful employment that will allow them to live and work in San Francisco.



REBUILDING A **STRONGER SAN FRANCISCO**

REPORT HIGHLIGHTS

The 175 projects included in this report were awarded and managed by seven departments within the City and County of San Francisco: Municipal Transportation Agency (MTA), Port of San Francisco (Port), Public Utilities Commission (PUC), Recreation and Parks Department (RPD), San Francisco International Airport (SFO), San Francisco Public Works (SFPW), with the addition of Mayor's Office of Housing and Community Development (MOHCD) and Development Agreements (DA), or privately-funded developments on City-owned land that are also subject to the Local Hiring Policy.



With COVID-related safety restrictions being lifted, the future of construction in San Francisco is promising.

1. 2,190,646 work hours on capital improvement projects and 998,251 work hours on housing developments subject to the Local Hiring Policy were reported between January 1, 2021 and December 31, 2021.
2. 35% of construction hours on capital improvement projects were performed by local residents in 2021.
3. The percentage of apprentice work hours performed by local residents exceeded the requirement at 51%.
4. While there was a 35% decrease in total hours from the previous reporting period, the share of local work hours increased by 10%, both overall and for apprentices.
5. The San Francisco Public Utilities Commission again showed the highest local hire percentages on PUC projects covered by the Policy with 41% of the total hours and 61% of apprentice hours being performed by local residents, demonstrating the positive impact of the PUC's Sewer System Improvement Program Project Labor Agreement and investment in outreach and programs that partner with CityBuild to support local hiring.
6. Expanded CityBuild training initiatives increased the number of training opportunities for San Francisco residents.





Executive Summary (continued)

Even during uncertain times, the construction industry remains one of the City's most viable entry-points for job seekers entering the workforce. As the City moves forward, OEWD's goal is to ensure that the Local Hiring Policy for Construction remains beneficial to local workers and the San Francisco economy. The creation of construction jobs on public infrastructure projects and housing developments addresses the undisputed needs of local workers and their families, particularly our most vulnerable residents.

OEWD places a strong emphasis on equity for San Francisco's most vulnerable communities and populations, as well as serving unemployed, underemployed, and underrepresented individuals within the construction sector. OEWD is committed to creating training and employment opportunities for local workers and to supporting local contractors with qualified residents.



As the City works toward economic recovery, CityBuild and the Local Hiring Policy ensures residents receive opportunities to work while supporting the economic vitality of our communities.



CAPITAL IMPROVEMENTS

35%

OF TOTAL WORK HOURS IN 2021 WERE
PERFORMED BY LOCAL RESIDENTS

51%

OF ALL APPRENTICE HOURS IN 2021 WERE
PERFORMED BY LOCAL RESIDENTS

1,444

LOCAL WORKERS

PUBLIC AND PRIVATE

223,069

TOTAL LOCAL APPRENTICE HOURS

478,211

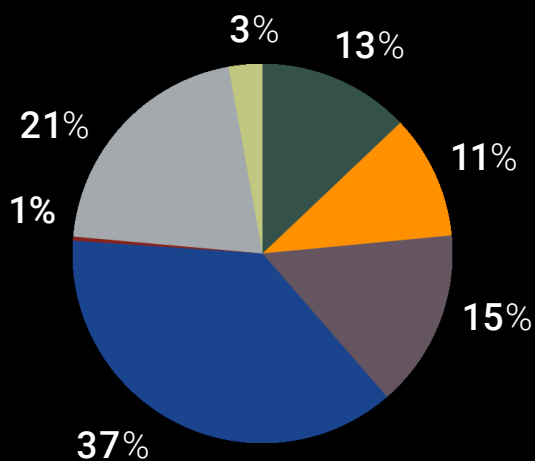
TOTAL APPRENTICE HOURS

1,033,692

TOTAL LOCAL HOURS

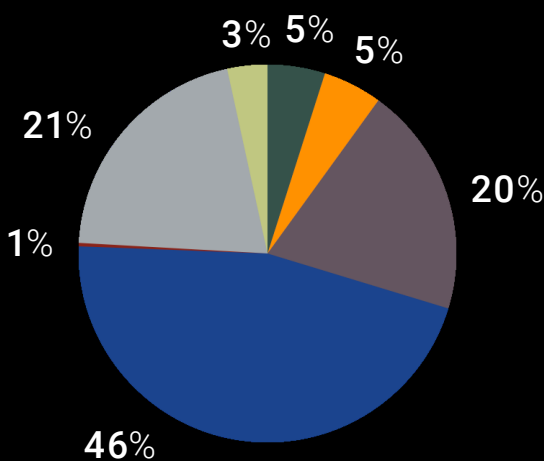
3,273,500

TOTAL WORK HOURS PERFORMED
ON ALL COVERED PROJECTS



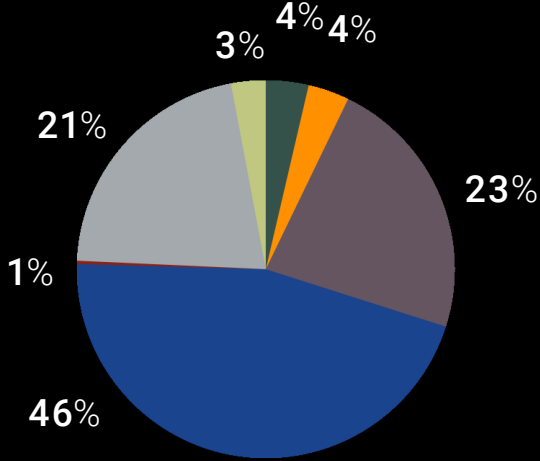
San Francisco Residents

2,053 total workers



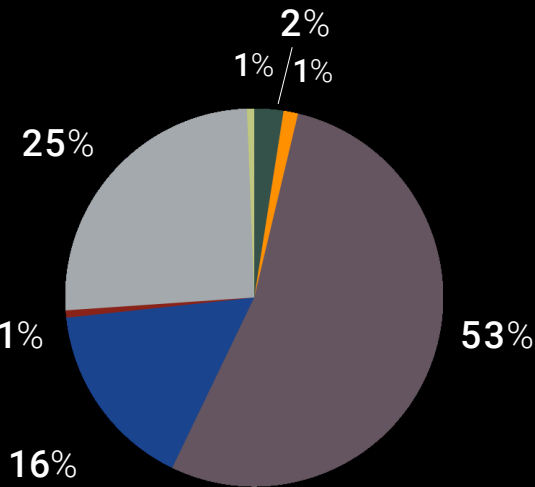
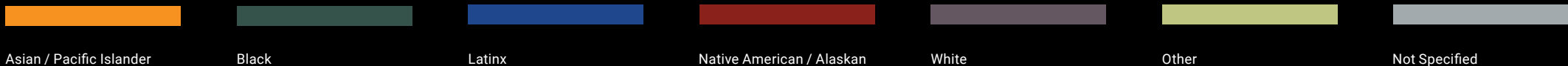
Bay Area Residents

9,011 total workers



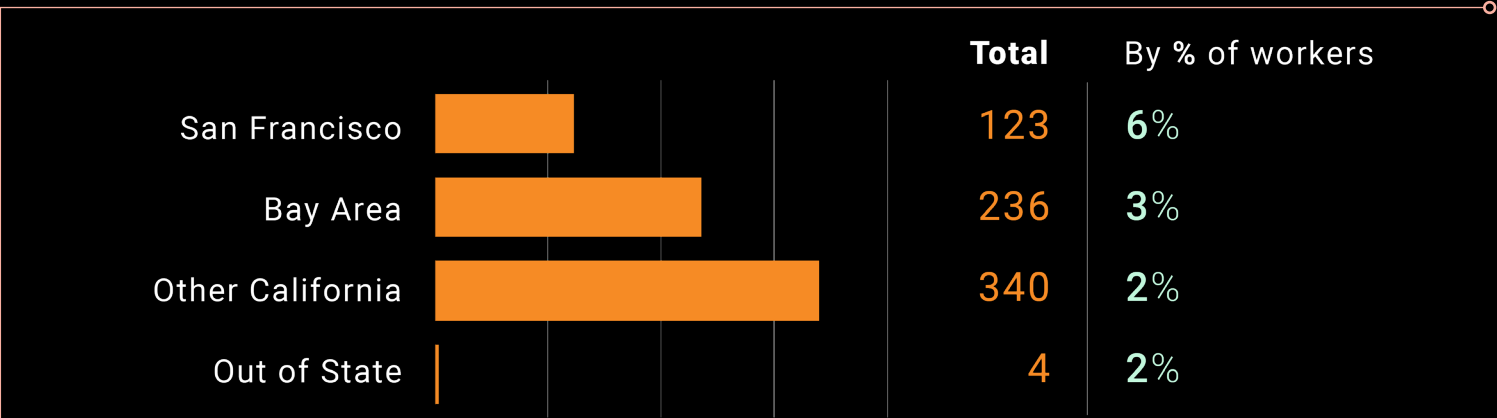
Other CA Residents

15,377 total workers



Out of State Residents

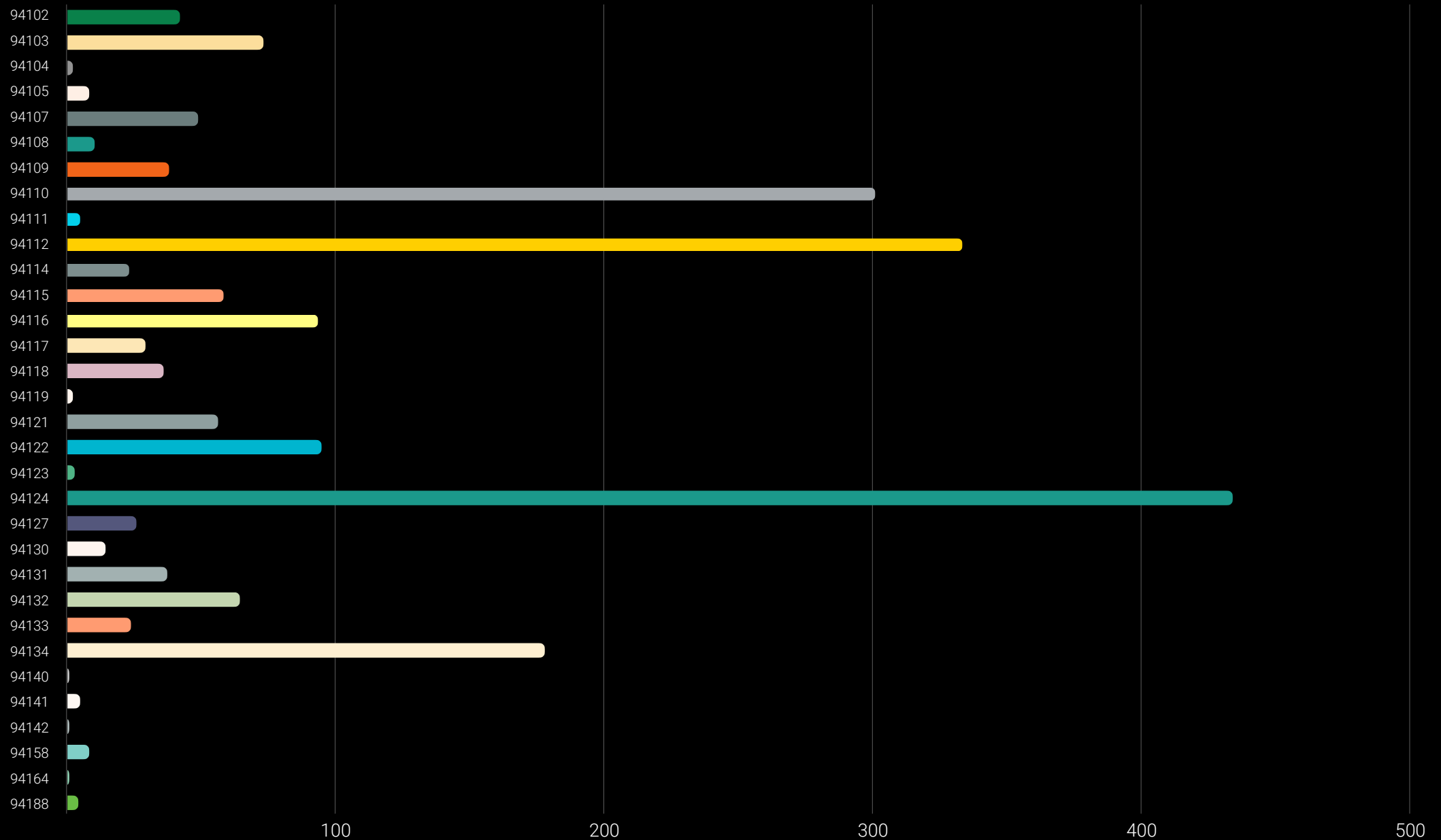
161 total workers



Female Worker Count

by residency

LOCAL HIRING BY DEMOGRAPHICS



Go to page 76 for more data by zip code.

SF WORKERS BY ZIPCODE



CHALLENGES


AND RECOMMENDATIONS

The pandemic severely impacted the construction industry. While the local hire data indicates success in retaining a strong local workforce, many trades continue to experience high unemployment rates. As San Francisco continues to recover economically, the Infrastructure Investment and Jobs Act will be a critical component in stimulating the construction industry and bringing back jobs created through public infrastructure.

Growing the pipeline of local workers remains a priority for OEWD. A look at the compliance data suggests that many contractors are challenged to meet the requirements of the Policy without reliance on the use of corrective action. To maximize opportunities for locals, the Ordinance permits the release of penalties utilizing any of four waiver mechanisms: 1) utilization of specialized trades; 2) credits for hiring local workers on non-covered projects; 3) sponsorship of new apprentices; and 4) hiring of local workers through direct entry agreements established between OEWD and Union partners.

In 2021, 36 public works projects covered by the Policy and monitored by OEWD were completed. An evaluation conducted by OEWD compliance staff determined that 17 projects, or 47%, were able to meet the Policy's requirements utilizing sufficient local workforce. Of the remaining 19 projects, a total of 22,554 deficient hours across various trades and levels were identified. 74.55 of these hours were subject to financial penalty totaling \$4,222.51, but most deficiencies were offset by the application of 7,619 credit hours for hiring local workers on non-covered projects, sponsorship of 18 new apprentices, and 8 opportunities created for direct entry hires – evidence that local residents are benefitting from the Policy.

This will be the first experience for many contractors working under a Mandatory Local Hire policy on housing development



projects on public land for the Mayor's Office of Housing and Community Development (MOHCD) and "DA Projects," which are private projects that incorporate the Policy through a development agreement. Whereas public works contractors have extensive experience working under the requirements, housing development contractors are still learning the policy, have a wider range of construction trades than traditional infrastructure work, and need to adjust their workforce to meet the requirements.

As OEWD continues to expand CityBuild Academy with additional special trainings to support the need for more local workers, significant measures are being taken to facilitate pre-apprentice entry for local residents into Union apprenticeship through direct entry agreements. In July 2020, the City finalized the "San Francisco Citywide Project Labor Agreement" with the San Francisco Building & Construction Trades Council. Within three (3) years of implementation, all Unions with a state-approved joint apprenticeship program in construction shall enter into agreements, or modify existing agreements, with CityBuild to ensure that graduates of CityBuild Academy have a pathway for direct entry into a Union's apprenticeship programs.

OEWD is committed to creating training and employment opportunities for local workers and places a strong emphasis on equity for San Francisco's most vulnerable communities and populations. OEWD prioritizes the referral of local workers from economically disadvantaged communities for employment on projects subject to Policy and for enrollment into CityBuild Academy. Our partnerships with a number of community-based organizations allow for targeted recruitment of local disadvantaged job seekers. Through the administration of the Policy, OEWD is able to leverage employment opportunities and connect job seekers with construction contractors through CityBuild's Employment Networking Services. OEWD continues to explore various means to effectively track project hours performed by these economically disadvantaged workers within our current certified payroll reporting system to ensure compliance with the local hire requirements.

CITYBUILD ACADEMY

CityBuild Academy aims to meet the demands of the construction industry by providing comprehensive pre-apprenticeship and construction administration training to San Francisco residents. Although the pandemic continued to present challenges to the construction industry, the Academy adapted to new safety protocols and a hybrid model of instruction to graduate a total of 79 pre-apprentices, 10 pre-apprentices through a special training partnership with University of California San Francisco, and 16 pre-apprentices through our very first all-women Mission Rock Academy in partnership with San Francisco Giants. This total of 105 graduates were provided with employment opportunities, aiding in the recovery of the local economy.



CityBuild provides a gateway to construction careers for San Francisco residents

Over **90%** of CityBuild Academy graduates have secured employment in various construction trades.

The Academy offers 12 to 18-week pre-apprenticeship and construction skills training program at the City College of San Francisco, Evans Campus. Trainees learn college level math while learning foundational skills, obtaining industry-recognized certifications, and gaining knowledge to enter the construction trades as successful new apprentices. Graduates also obtain an MC3 (Multi-Craft Core Curriculum) Certification, a nationally recognized certificate offered through the curriculum from the North America's Building Trades Unions. Since 2006, 1,391 San Francisco residents have graduated from CityBuild Academy and over 1,260 graduates have secured employment in various construction trades.



CityBuild Special Trainings for Construction

The CityBuild Academy is limited to two trainings per year, but increased demand within the construction industry – particularly on multi-year developments – requires growing the pipeline of new apprentices even further than CityBuild Academy. In an effort to provide contractors with a larger qualified pool of candidates, CityBuild has expanded its training opportunities through targeted cohorts of special trainings. The curriculum is offered to pre-apprentices seeking employment in the trade that is in demand for the project and is modeled after previously piloted training frameworks targeted towards long-term developments.

In partnership with the San Francisco Giants, CityBuild expanded training through Mission Rock Academy, graduating an all-women cohort of new apprentices in November 2021. Fourteen of 16 graduates were hired to work on the Mission Rock development and other construction projects as laborers, carpenters, tapers, and cement masons. In addition, in December 2021, CityBuild partnered with UCSF to graduate 10 pre-apprentices to work on UCSF projects. These specialized trainings will serve as the model for focused instruction to support long-term projects, such as the Potrero Power Station, India Basin, Pier 70, and the future UCSF Parnassus Heights project.

**Learn.
Build.
Earn.**

work hours

OEWD utilizes certified payroll records from the City's Project Reporting System (PRS) to verify hours by local residents. Certified payroll data entered into the City's PRS, LCPtracker, between January 1, 2021 — December 31, 2021 was used to produce this report.

The following tables present hours worked by all workers, as well as local residents, on projects subject to the Policy.

Department	Active Projects	Total Work Hours	Local %	Local Apprentice %
PORT	3	12K	48%	58%
SFO	20	656K	27%	45%
MTA	9	194K	23%	30%
PUC	61	1.1M	41%	61%
SFPW	55	250K	28%	43%
RPD	13	20K	43%	43%
MOHCD	7	401K	24%	34%
DA*	8	600K	24%	45%

* DA — Private projects under a development agreement with local hire requirements.

LOCAL HIRING BY DEPARTMENT

The data below includes all projects subject to 20%, 25% and 30% requirements (7%, 8% and 11% at SFO, where San Mateo County residents are also counted as local workers.

Total Work Hours To Date (March 25, 2011 - December 31, 2021)

Dept	Total Hours			Apprentice Hours		
	Total	Local	Local %	Total	Local	Local %
PORT	685,279	175,296	26%	106,760	42,172	40%
SFO	10,187,244	2,938,947	29%	1,792,818	797,239	44%
MTA	1,309,285	469,841	36%	147,840	66,931	45%
PUC	5,998,849	2,564,427	43%	662,124	437,169	66%
SFPW	7,760,274	2,451,718	32%	1,158,392	508,659	44%
RPD	1,089,933	423,593	39%	118,333	65,283	55%
DA	638,969	152,436	24%	94,547	42,567	45%
MOHCD	400,990	96,329	24%	92,368	31,677	34%
TOTAL	28,070,823	9,272,586	33%	4,173,181	1,991,695	48%

The Local Hiring Annual Report has historically reported aggregate data to account for the fluctuations in work hours over the course of a project, particularly those that span across multiple years. Additionally, to reflect the Policy's effective date, data through April 1st of each year was evaluated and presented in the report. The 2021 Annual Report shifted to annual reporting of hours within a calendar year. The data on the next page presents local hiring information gathered for the previous three reporting periods to show data over time as reporting periods have changed.

January 1, 2020 - December 31, 2020

Dept	Total Hours			Apprentice Hours		
	Total	Local	Local %	Total	Local	Local %
PORT	52,291	8,052	15%	9,136	4,289	47%
SFO	1,204,759	341,304	28%	193,231	76,444	40%
MTA	213,205	69,134	32%	23,908	10,541	44%
PUC	995,841	413,623	42%	91,443	64,200	70%
SFPW	748,548	230,900	31%	104,258	40,307	39%
RPD	163,022	60,101	37%	19,919	9,900	50%
TOTAL	3,377,665	1,123,113	33%	441,895	208,681	47%

April 2, 2019 - April 1, 2020

Dept	Total Hours			Apprentice Hours		
	Total	Local	Local %	Total	Local	Local %
PORT	80,666	16,829	21%	15,530	4,532	29%
SFO	2,560,027	672,985	26%	433,414	177,132	41%
MTA	362,785	143,489	40%	39,598	19,664	50%
PUC	546,134	230,105	42%	75,383	49,684	66%
SFPW	1,138,445	348,722	31%	175,350	70,032	40%
RPD	183,005	66,530	36%	23,958	11,587	48%
TOTAL	4,871,062	1,478,660	30%	763,233	332,630	44%

March 25, 2018 - April 1, 2019

Dept	Total Hours			Apprentice Hours		
	Total	Local	Local %	Total	Local	Local %
PORT	85,672	22,469	26%	11,036	3,507	32%
SFO	2,717,789	677,494	25%	525,962	199,770	38%
MTA	190,122	74,802	39%	23,519	10,868	46%
PUC	584,407	266,943	46%	65,030	41,403	64%
SFPW	1,479,062	408,492	28%	251,538	84,136	33%
RPD	61,344	20,424	33%	6,085	2,937	48%
TOTAL	5,118,396	1,470,624	29%	833,170	342,621	41%

Port of San Francisco

Projects at SFO are subject to an overall 11% local hiring requirement and a 50% local hiring requirement for apprentices. Additionally, through a reciprocity agreement, residents of San Mateo County are considered local workers.

Trade	Total Hours			Apprentice Hours		
	Total	Local	Local %	Total	Local	Local %
Asbestos Removal Worker	669	0	0%	0	0	0%
Carpenter and Related Trades	2,651	1,558	59%	322	72	22%
Cement Mason	17	9	53%	0	0	0%
Driver	225	52	23%	0	0	0%
Drywall Installer/Lather	306	0	0%	22	0	0%
Electrician	367	237	65%	119	119	100%
Iron Worker	16	8	50%	0	0	0%
Laborer and Related Classifications	4,532	2,496	55%	918	872	95%
Operating Engineer	1,004	967	96%	0	0	0%
Painter	442	0	0%	48	0	0%
Plumber	290	93	32%	0	0	0%
Roofer	1,064	135	13%	396	0	0%
Sheet Metal Worker	78	22	28%	20	0	0%
TOTAL	11,658	5,576	48%	1,844	1,063	58%

Project	Total Hours			Apprentice Hours		
	Total	Local	Local %	Total	Local	Local %
2812 - Crane Cove Park, Construction Package 2 - Park Improvements Rebid	1,084	64	6%	147	40	27%
2814R Crane Cove Park Building 49 Re-Bid	6,905	2,485	36%	762	87	11%
2795 Heron's Head Park Path & Electrical Improvements	3,670	3,027	82%	936	936	100%
TOTAL	11,658	5,576	48%	1,844	1,063	58%

San Francisco International Airport

Trade	Total Hours			Apprentice Hours		
	Total	Local	Local %	Total	Local	Local %
Asbestos Removal Worker	3,410	985	29%	0	0	0%
Asbestos Worker, Heat and Frost Insulator	2,815	1,111	39%	370	8	2%
Bricklayer, Blocklayer	871	0	0%	117	0	0%
Bricktender	68	0	0%	0	0	0%
Building/Construction Inspector and Field Soils and Material Tester	285	0	0%	0	0	0%
Carpenter and Related Trades	89,076	16,348	18%	15,907	5,612	35%
Carpet, Linoleum	2,631	70	3%	315	0	0%
Cement Mason	3,428	683	20%	354	235	66%
Driver	2,169	654	30%	0	0	0%
Drywall Installer/Lather	56,832	10,221	18%	16,272	6,753	42%
Electical Utility Lineman	88	0	0%	0	0	0%
Electrician	184,518	66,282	36%	18,156	11,874	65%
Elevator Constructor	11,743	2,052	17%	5,150	1,991	39%
Field Surveyor	293	87	30%	2	2	100%
Glazier	36,615	6,848	19%	14,257	4,123	29%
Iron Worker	17,777	3,084	17%	4,418	920	21%
Laborer and Related Classifications	98,682	33,393	34%	9,285	6,149	66%
Marble Mason	127	0	0%	0	0	0%
Modular Furniture Installer	1,057	213	20%	0	0	0%
Operating Engineer	18,586	6,615	36%	882	191	22%
Painter	36,063	10,153	28%	5,770	1,685	29%
Parking and Highway Improvement Painter	713	139	19%	35	0	0%
Pile Driver	557	59	11%	65	13	20%
Plaster Tender	3,053	79	3%	346	0	0%
Plasterer	2,756	0	0%	182	0	0%
Plumber	25,880	10,492	41%	6,477	5,128	79%
Roofer	10,563	238	2%	738	148	20%
Sheet Metal Worker	9,569	3,344	35%	3,385	1,425	42%
Teamster	1,158	974	84%	0	0	0%
Terrazzo Worker	29,863	2,752	9%	2,242	978	44%
Tile Finisher	1,403	0	0%	224	0	0%
Tile Setter	3,343	0	0%	750	0	0%
TOTAL	655,987	176,874	27%	105,695	47,233	45%

San Francisco International Airport

Project	Total Hours			Apprentice Hours		
	Total	Local	Local %	Total	Local	Local %
10010.66-10010.66 - New Boarding Area B	137,096	40,647	30%	19,389	8,148	42%
10011.66-10011.66 - Terminal 1 Center Renovation	194,749	43,239	22%	28,475	10,048	35%
10072-10072.66 - Courtyard 3 Connector	191,252	52,461	27%	38,549	19,427	50%
10504.77-10504.77 - AirTrain Systems Extension and Train Control Upgrades	500	258	52%	74	0	0%
10568-10568.61 - Airport Terminals Fire Alarm System Upgrade	44	0	0%	0	0	0%
11001-11001.66 - The Wayfinding Enhancement Program	6,277	2,017	32%	108	52	48%
11055-11055.66 - Boarding Area A Gate Enhancements	1,144	72	6%	0	0	0%
11117.61 - Materials Testing Lab	1,708	700	41%	350	143	41%
11118.76 - Design-Build Services for International Terminal Building Phase 1	80,530	22,563	28%	12,845	5,740	45%
11179.61 - Boarding Area D & G eGSE Charging Stations	6,810	2,519	37%	1,142	371	33%
11213.61 - Boarding Area 'G' 400 Hertz System Infrastructure Upgrade	882	576	65%	241	176	73%
11227-11227.51 - As-Needed Construction Services	2,305	1,100	48%	32	0	0%
11227-11227.52 - As-Needed Construction Services	1,636	609	37%	239	239	100%
11227-11227.53 - As-Needed Construction Services	1,430	220	15%	163	141	87%
11227-11227.54 - As-Needed Construction Contract	5	0	0%	0	0	0%
11309.61 - Firehouse #2 Improvements	729	519	71%	142	118	83%
11365.66 - Design-Build Services for the International Terminal Building Phase 2 Project	20,298	4,497	22%	3,014	1,698	56%
8465C.66 - Superbay Hangar Fire Suppression System Replacement Project	164	148	90%	0	0	0%
8589B.61 - Underground Utility Improvement, Industrial Waste System Phase II	8,426	4,725	56%	934	934	100%
9049-9049 - Overhead Variable Message and Guide Signs Replacement	5	5	100%	0	0	0%
TOTAL	655,987	176,874	27%	105,695	47,233	45%

San Francisco Municipal Transportation Agency

Trade	Total Hours			Apprentice Hours		
	Total	Local	Local %	Total	Local	Local %
Bricklayer, Blocklayer	2,738	64	2%	0	0	0%
Building/Construction Inspector and Field Soils and Material Tester	13,351	2,494	19%	4,541	441	10%
Carpenter and Related Trades	10,214	3,424	34%	1,150	1,058	92%
Cement Mason	23,812	3,613	15%	1,727	404	23%
Driver	2,683	22	1%	0	0	0%
Electical Utility Lineman	14,581	0	0%	1,390	0	0%
Electrician	10,747	6,663	62%	4,105	3,253	79%
Elevator Constructor	2,034	2	0%	333	0	0%
Field Surveyor	627	0	0%	150	0	0%
Iron Worker	48	24	50%	0	0	0%
Laborer and Related Classifications	80,194	15,871	20%	4,611	131	3%
Operating Engineer	16,370	8,435	52%	51	0	0%
Parking and Highway Improvement Painter	54	0	0%	0	0	0%
Plumber	2,955	1,842	62%	14	0	0%
Sheet Metal Worker	787	147	19%	247	147	59%
Teamster	12,736	2,435	19%	0	0	0%
TOTAL	193,929	45,032	23%	18,316	5,433	30%

San Francisco Municipal Transportation Agency

Project	Total Hours			Apprentice Hours		
	Total	Local	Local %	Total	Local	Local %
1289: Van Ness Corridor Transit Improvement Projects - Phase I	186,304	44,089	24%	17,338	5,133	30%
1301 JOC Local	329	126	38%	16	16	100%
1302 JOC Local	680	310	46%	155	138	89%
1303R 22 Fillmore Transit Priority Project	141	31	22%	11	0	0%
1304 Muni Metro System King Substation Upgrade	2,972	285	10%	220	0	0%
1309R - Muni Metro East - Boiler and HVAC Rehabilitation Project	1,470	190	13%	245	147	60%
SFMTA 2017-01 STAR Elevator Maintenance	40	0	0%	0	0	0%
SFMTA 2017-40 Kone Elevator Maintenance	952	2	0%	8	0	0%
SFMTA 2017-42 ThyssenKrupp Elevator Escalator Maintenance and Repairs	1,042	0	0%	325	0	0%
TOTAL	193,929	45,032	23%	18,316	5,433	30%

San Francisco Public Utilities Commission

Trade	Total Hours			Apprentice Hours		
	Total	Local	Local %	Total	Local	Local %
Asbestos Removal Worker	975	269	28%	0	0	0%
Asbestos Worker, Heat and Frost Insulator	2,144	255	12%	577	20	3%
Boilermaker/Blacksmith	4,786	385	8%	259	47	18%
Bricklayer, Blocklayer	219	192	88%	0	0	0%
Building/Construction Inspector and Field Soils and Material Tester	1,194	75	6%	226	0	0%
Carpenter and Related Trades	79,964	32,452	41%	16,071	7,820	49%
Carpet, Linoleum	76	40	53%	0	0	0%
Cement Mason	25,625	9,946	39%	2,918	1,567	54%
Driver	45,734	14,264	31%	0	0	0%
Drywall Installer/Lather	35,257	11,904	34%	10,632	4,112	39%
Electrician	58,410	21,785	37%	10,484	9,125	87%
Elevator Constructor	1,073	0	0%	488	0	0%

San Francisco Public Utilities Commission

Trade	Total Hours			Apprentice Hours		
	Total	Local	Local %	Total	Local	Local %
Field Surveyor	9,655	652	7%	2,910	278	10%
Glazier	10,920	3,435	31%	3,970	1,694	43%
Iron Worker	29,896	9,488	32%	7,565	3,316	44%
Laborer and Related Classifications	486,336	223,408	46%	47,927	33,941	71%
Marble Mason	121	0	0%	50	0	0%
Modular Furniture Installer	122	0	0%	16	0	0%
Operating Engineer	180,378	77,393	43%	9,741	7,415	76%
Painter	12,984	4,493	35%	1,994	783	39%
Pile Driver	3,654	666	18%	614	518	84%
Plaster Tender	729	0	0%	0	0	0%
Plasterer	2,416	282	12%	0	0	0%
Plumber	22,830	10,411	46%	7,229	5,593	77%
Roofer	7,091	2,915	41%	2,519	1,210	48%

San Francisco Public Utilities Commission

Trade	Total Hours			Apprentice Hours		
	Total	Local	Local %	Total	Local	Local %
Sheet Metal Worker	12,569	3,385	27%	2,279	1,073	47%
Teamster	3,542	1,455	41%	0	0	0%
Telecommunications Technician	92	0	0%	0	0	0%
Terrazzo Worker	139	64	46%	75	0	0%
Tile Finisher	2,846	1,352	48%	1,200	1,192	99%
Tile Setter	3,070	337	11%	1,415	8	1%
Traffic Control/Lane Closure (Laborer)	12,615	6,110	48%	0	0	0%
Tree Maintenance	2,719	897	33%	0	0	0%
Tunnel Worker (Laborer)	3,378	2,185	65%	0	0	0%
Total	1,063,555	440,492	41%	131,155	79,710	61%

San Francisco Public Utilities Commission

Project	Total Hours			Apprentice Hours		
	Total	Local	Local %	Total	Local	Local %
DB-128R2 - Bay Corridor Transmission and Distribution – Phase 1	384	12	3%	26	0	0%
DB-129.1 - Bay Corridor Transmission & Distribution - Phase 2 (2019)	121,860	33,905	28%	13,499	7,384	55%
HH-1000R - Mountain Tunnel Improvements Project	62,542	38,187	61%	7,610	6,542	86%
HH-1001 - Moccasin Reservoir Perimeter Security Fence	128	93	73%	8	8	100%
HH-1003R - Moccasin Powerhouse Generator Step Up Transformer Installation	1,377	911	66%	273	273	100%
JOC-51	137	68	50%	36	36	100%
JOC-59	986	341	35%	76	44	58%
JOC-60	4,591	4,067	89%	328	0	0%
JOC-61	85	85	100%	0	0	0%
JOC-64	5,011	3,091	62%	153	153	100%
JOC-66	242	129	53%	8	0	0%
JOC-68	1,435	1,029	72%	0	0	0%
JOC-70	72	40	56%	0	0	0%
JOC-71R	862	551	64%	191	175	92%
WD-2616 - 8-Inch Ductile Iron Water Main Replacement on Baker Street from Geary Boulevard to Broadway Street and on Sutter Street from Divisadero Street to Presidio Avenue	8,683	5,940	68%	0	0	0%
WD-2687R - Auxiliary Water Supply System Pumping Station No. 2 Improvements	19,636	11,255	57%	4,531	1,909	42%
WD-2692 - 16-Inch and 8-Inch Ductile Iron Water Main Installation, Sewer Replacement on Geary Boulevard from 32nd to 48th Avenues	159	45	28%	0	0	0%
WD-2693 - 8-Inch and 12-Inch Ductile Iron Water Main Replacement on 21st, Bryant, Ford, Hancock, and Cumberland Streets	6,336	3,106	49%	42	42	100%
WD-2717 - College Hill Reservoir Outlet Structure and Pipeline	216	80	37%	0	0	0%
WD-2719 - 8-Inch DIP and 12-Inch ERDIP Water Main Installation on 22nd Street from Fair Oaks Street to Hampshire Street	415	133	32%	49	49	100%

San Francisco Public Utilities Commission

Project	Total Hours			Apprentice Hours		
	Total	Local	Local %	Total	Local	Local %
WD-2739 - Pavement Renovation, Sewer Replacement, and Water Main Replacement on Castro Street and 26th Street	36,055	19,934	55%	5,419	4,412	81%
WD-2794A - Sunol Long Term Improvements Sunol Corporation Yard	639	380	59%	0	0	0%
WD-2794B - Sunol Long Term Improvements - Alameda Creek Watershed Center	39,367	23,501	60%	6,466	4,272	66%
WD-2797 - San Francisco Westside Recycled Water Pump Station and Reservoir	15,019	2,818	19%	1,130	152	13%
WD-2811 - 8-Inch and 16-Inch Ductile Iron Water Main Replacement on 17th Street from Clayton Street to Douglass Street and Various Side Streets	9,178	5,397	59%	143	143	100%
WD-2829R - San Andreas Pipeline No. 2 Replacement	573	492	86%	16	16	100%
WD-2852R - San Francisco Westside Recycled Water Irrigation System Retrofits	4,513	1,632	36%	231	231	100%
WD-2854A - 525 Golden Gate Avenue Roof Access and Fall Protection	607	79	13%	160	0	0%
WD-2854B - 525 Golden Gate Avenue Tower Access and Fall Protection	164	51	31%	0	0	0%
WD-2858R - Sunol Valley Water Treatment Plant Water Quality Modular Office	548	388	71%	78	59	76%
WD-2861 - Auxiliary Water Supply System Clarendon Supply 2019	1,463	653	45%	284	178	63%
WD-2868R - San Francisco Local Water As-Needed Paving FY 21-24	11,766	5,076	43%	490	490	100%
WD-2880R - Warehouse Office Suite Renovation, 1990 Newcomb Avenue, San Francisco	634	134	21%	11	11	100%
WW-628 - Southeast Water Pollution Control Plant New Headworks Facility	173,239	66,378	38%	18,810	9,876	53%
WW-632 - Southeast Water Pollution Control Plant Existing Digester Gas Handling Improvements	150	0	0%	53	0	0%
WW-639 - Oceanside Water Pollution Control Plant Digester Gas Utilization Upgrades	20,312	7,646	38%	2,951	2,188	74%
WW-644 - As-Needed Sewer Sealing	196	0	0%	0	0	0%
WW-647R - Southeast Water Pollution Control Plant Biosolids Digester Facilities Project	225,304	71,368	32%	18,781	11,032	59%
WW-651 - Griffith Pump Station Improvements	23	0	0%	0	0	0%
WW-654 - Southeast Water Pollution Control Plant Buildings 040, 041, 044, 060, 061, 062, 925, And 960 Mechanical Improvements	2,764	777	28%	56	0	0%

San Francisco Public Utilities Commission

Project	Total Hours			Apprentice Hours		
	Total	Local	Local %	Total	Local	Local %
WW-655 - As-Needed Main Sewer Replacement No. 7	5,891	5,259	89%	215	215	100%
WW-662R - Southeast Water Pollution Control Plant Power Feed and Primary Switchgear Upgrades	11,671	3,200	27%	549	138	25%
WW-664 - North Point Wet Weather Facility Sedimentation Tank Influent Gate Upgrades	232	120	52%	0	0	0%
WW-667 Mariposa Dry-Weather Pump Station	15,217	6,612	43%	1,594	1,302	82%
WW-673 - Oceanside Water Pollution Control Plant Door Assembly	2,777	1,879	68%	1,088	885	81%
WW-677 - Various Locations Sewer Replacement No. 6	19,001	17,164	90%	927	913	98%
WW-678 - Various Locations Sewer Replacement No. 7	342	163	48%	18	18	100%
WW-679 - Various Locations Sewer Replacement No. 8	9,448	8,703	92%	126	126	100%
WW-682R - Southeast Community Center at 1550 Evans	135,909	48,361	36%	36,821	20,673	56%
WW-683R - Sansome, 5th, 6th (North), and Division Streets Combined Sewer Discharge Rehabilitation and Backflow Prevention	164	108	66%	20	20	100%
WW-685R - North Shore Pump Station Wet Weather Improvements	3,144	960	31%	544	426	78%
WW-687 - Force Main Rehabilitation at Embarcadero and Jackson	11,423	5,244	46%	162	94	58%
WW-691 Sunset Boulevard Greenway -- Phase II Irving Street to Ulloa Street	138	138	100%	0	0	0%
WW-693 - As-Needed Spot Sewer Replacement No. 40	26,052	13,208	51%	2,066	1,574	76%
WW-696 - Cargo Way Flush Line	8,951	3,429	38%	1,416	915	65%
WW-697 - As-Needed Main Sewer Replacement No. 8	2,134	1,173	55%	0	0	0%
WW-700 - As-Needed Sewer Cleaning and Inspection (FY21)	1,650	250	15%	0	0	0%
WW-702R - Jackson, Griffith, and Pierce Streets Combined Sewer Discharge Rehabilitation and Backflow Prevention	10,112	5,017	50%	1,801	1,462	81%
WW-703 - Mission Street, 16th to Cesar Chavez, Brick Sewer Rehabilitation	15,387	5,836	38%	796	635	80%
WW-706 - Oceanside Water Pollution Control Plant Egg-Shaped Digester Interior Liner Rehabilitation	5,837	3,678	63%	1,066	601	56%
WW-712 - New Montgomery, Jessie, Minna, and Mission Streets Brick Sewer Rehabilitation	415	227	55%	45	45	100%
TOTAL	1,063,555	440,492	41%	131,155	79,710	61%

San Francisco Public Works

Trade	Total Hours			Apprentice Hours		
	Total	Local	Local %	Total	Local	Local %
Asbestos Removal Worker	2,414	28	1%	0	0	0%
Asbestos Worker, Heat and Frost	143	121	85%	2	0	0%
Bricklayer, Blocklayer	2,436	0	0%	8	0	0%
Building/Construction Inspector and	32	4	13%	8	0	0%
Carpenter and Related Trades	14,370	3,494	24%	3,118	495	16%
Carpet, Linoleum	1,023	8	1%	336	8	2%
Cement Mason	12,370	4,456	36%	1,499	895	60%
Driver	4,970	3,058	62%	0	0	0%
Drywall Installer/Lather	2,005	72	4%	242	0	0%
Electrician	19,009	5,684	30%	3,906	2,149	55%
Elevator Constructor	12,789	191	1%	5,568	188	3%
Glazier	2,305	661	29%	690	445	65%
Iron Worker	1,998	241	12%	378	7	2%
Laborer and Related Classifications	119,376	53,916	45%	8,223	5,554	68%
Marble Mason	64	64	100%	0	0	0%
Modular Furniture Installer	87	0	0%	0	0	0%
Operating Engineer	26,214	14,737	56%	2,325	1,994	86%
Painter	3,210	1,719	54%	385	347	90%

San Francisco Public Works

Trade	Total Hours			Apprentice Hours		
	Total	Local	Local %	Total	Local	Local %
Parking and Highway Improvement	132	0	0%	17	0	0%
Plaster Tender	13	0	0%	0	0	0%
Plasterer	13	0	0%	5	0	0%
Plumber	4,109	1,476	36%	623	29	5%
Roofer	1,169	301	26%	308	81	26%
Sheet Metal Worker	2,677	171	6%	442	35	8%
Sprinkler Fitter	17	0	0%	0	0	0%
Teamster	463	90	19%	0	0	0%
Telecommunications Technician	16	0	0%	0	0	0%
Terrazzo Worker	248	0	0%	0	0	0%
Tile Finisher	34	0	0%	20	0	0%
Tile Setter	121	23	19%	18	0	0%
Tree Maintenance	15,449	4,274	28%	0	0	0%
TOTAL	249,272	94,788	38%	28,117	12,225	43%

San Francisco Public Works

Project	Total Hours			Apprentice Hours		
	Total	Local	Local %	Total	Local	Local %
100000927 Animal Care & Control and Burke Warehouse Facilities Construction Manager/General Contractor (CM/GC) Services	6,601	1,820	28%	816	600	74%
1000005832 19th Avenue (State Route 1) Combined City Project	46,383	21,426	46%	5,297	3,518	66%
1000005837 Upper Haight Transit Improvements and Pedestrian Realm Project	1,276	541	42%	91	91	100%
1000005850 Zsfg Building 5 6h Surge Space	1,015	660	65%	94	0	0%
1000005851 ZSFG Building 5 Rehabilitation Department Relocation (Rebid)	7,663	1,429	19%	528	186	35%
1000005981 SFMTA Facilities - Fire Alarm Upgrades	278	37	13%	12	8	65%
1000005982 SFMTA Parking Garage Elevator Modernization	664	0	0%	16	0	0%
1000006282 San Francisco Ambulance Deployment Facility	8,023	2,142	27%	914	386	42%
1000007415 Lombard Street Vision Zero	242	104	43%	8	8	100%
1000007419 Contract No. 34 - Traffic Signal Modifications	610	387	63%	154	154	100%
1000007420(R2) UN Plaza Water Storage and Distribution (Rebid 2)	110	0	0%	0	0	0%
1000007421 Maxine Hall Health Center Renovation	14,073	2,030	14%	2,941	696	24%
1000007915 Palou Avenue Infrastructure Improvements	2,884	643	22%	25	25	100%
1000007916[R] Harrison Street Infrastructure Improvements (Rebid)	2,991	1,983	66%	82	82	100%
1000007946 SFFD Fireboat Station 35	39,225	13,582	35%	5,310	2,794	53%
1000008639 General As-Needed Contract G07 Concrete Slicing	7,339	3,897	53%	0	0	0%
1000009582 General As-Needed Contract G08 Tree Services	2,456	578	24%	0	0	0%
1000009782 Various Locations Pavement Renovation No. 35 & Sewer Replacement	21,761	8,360	38%	2,782	2,227	80%
1000010330 Various Locations Pavement Renovation No. 39 And Sewer Replacement	358	176	49%	10	10	100%

San Francisco Public Works

Project	Total Hours			Apprentice Hours		
	Total	Local	Local %	Total	Local	Local %
1000011498 Jefferson Street Improvements Phase 2	5,016	641	13%	255	118	46%
1000011499 General As-Needed Contract G11 Tree Services	5,418	1,688	31%	0	0	0%
1000011945 John Yehall Chin School Safe Routes to School	1,845	1,019	55%	156	118	76%
1000012288 Various Locations Pavement Renovation No. 36 and Sewer Replacement	633	432	68%	16	16	100%
1000012552 Various Locations Pavement Renovation No. 38 and Sewer Replacement	15,623	9,473	61%	439	359	82%
1000012784 Transbay Folsom Streetscape Improvements (Rebid)	3,037	579	19%	186	103	55%
1000013166 Lower Haight Traffic Signals (Muni Forward)	179	90	50%	23	23	100%
1000013295 San Francisco Public Library Main Library Elevator Upgrades	10,190	17	0%	4,272	0	0%
1000013347 Various Locations Pavement Renovation No. 43 and Sewer Replacement	3,590	1,514	42%	490	239	49%
1000013413 Various Locations Pavement Renovation No. 40 and Sewer Replacement	19,058	15,682	82%	935	810	87%
1000015025 Sunset and Parkside Streets Pavement Renovation and Sewer Replacement	9,695	3,157	33%	1,038	778	75%
1000015026 San Francisco County Jail #2 Kitchen Renovation	4,730	758	16%	1,070	0	0%
1000015029 190 9th Street Windows Replacement	2,461	603	25%	791	412	52%
1000015033 Mission Cultural Center for Latino Arts Elevator and Barrier Removal	2,823	803	28%	545	23	4%
1000015860 Paul Avenue, Woolsey Street & Salinas Avenue Pavement Renovation & Sewer Replacement	816	435	53%	86	86	100%
1000016212 P.H.S. 2016 Fire Stations 6, 11, 12, 21, & 38 Hose Tower Removal & Roof Replacement	547	340	62%	119	33	28%
1000016598 Various Locations Pavement Renovation No. 47	422	150	36%	0	0	0%
1000017005 Fulton Street and Grove Street Pavement Renovation and Sewer Replacement	596	481	81%	0	0	0%
1000017006 PW Various Locations NO. 31B Infrastructure Improvements	4,635	1,276	28%	342	149	0%

San Francisco Public Works

Project	Total Hours			Apprentice Hours		
	Total	Local	Local %	Total	Local	Local %
1000017138 Page Street Neighborway	344	80	23%	72	72	0%
1000021730 PW City Hall Re-Roof 1A	354	208	59%	81	81	0%
2126J Polk Streetscape Project (Polk Complete Street) (FCE16077-1)	53	0	0%	0	0	0%
2300J California Laurel Village Improvement Project (FCE17132)	28	0	0%	0	0	0%
2541JR Inner Sunset Streetscape & Muni Forward Project	109	45	41%	0	0	0%
2593J 22nd Street Green Connection (FCE17118)	138	28	20%	0	0	0%
2823J Walk First Pedestrian Countdown Signals No. 1 (FCE17126)	207	161	78%	70	70	100%
8754A 1500 Mission Street	3,453	513	15%	395	95	24%
G02-01 MUNI Forward	1,894	1,429	75%	24	24	100%
J33-Job Order Contract 33	4,309	1,297	30%	605	73	12%
J35-Job Order Contract 35	1,650	719	44%	192	35	18%
J37- Job Order Contract 37	99	16	16%	0	0	0%
J38-Job Order Contract 38	2,287	875	38%	406	161	40%
J39- Job Order Contract 39	1,687	429	25%	36	10	27%
J44-Job Order Contract 44	830	373	45%	88	0	0%
J48-Job Order Contract 48	8,057	1,262	16%	1,623	354	22%
M11-01 Tree Services	4,484	490	11%	0	0	0%
M12-01 Tree Services	3,255	1,518	47%	0	0	0%
TOTAL	288,498	108,370	38%	33,428	15,019	45%

San Francisco Recreation and Parks

Trade	Total Hours			Apprentice Hours		
	Total	Local	Local %	Total	Local	Local %
Asbestos Removal Worker	16	0	0%	0	0	0%
Carpenter and Related Trades	1,640	1,442	88%	16	16	100%
Carpet, Linoleum	1,256	79	6%	167	79	47%
Cement Mason	1,238	800	65%	62	56	90%
Driver	7	5	68%	0	0	0%
Electrician	737	93	13%	244	34	14%
Glazier	41	5	12%	0	0	0%
Iron Worker	386	126	33%	0	0	0%
Laborer and Related Classifications	11,915	4,717	40%	310	140	45%
Operating Engineer	2,103	987	47%	37	37	100%
Painter	329	227	69%	24	8	33%
Plumber	104	47	45%	0	0	0%
Roofer	46	0	0%	0	0	0%
Sheet Metal Worker	51	30	59%	0	0	0%
Teamster	10	0	0%	0	0	0%
Telecommunications Technician	36	28	78%	0	0	0%
TOTAL	19,914	8,584	43%	859	369	43%

San Francisco Recreation and Parks

Project	Total Hours			Apprentice Hours		
	Total	Local	Local %	Total	Local	Local %
10000021586 Rec-Con21-0036 Victoria Manalo Drive Lighting And Park Improvements	3,770	1,787	47%	203	0	0%
1000006022 Guy Place Mini Park (Rebid 2)	29	21	72%	0	0	0%
1000008750 Willie "Woo Woo" Wong Playground	969	622	64%	12	12	100%
1000009586 Garfield Pool Renovation	668	131	20%	32	24	76%
1000009783 Margaret Hayward Recreation Center Renovation	279	47	17%	6	0	0%
1000010914 Merced Heights Playground Renovation (Rebid)	2	2	100%	0	0	0%
1000012733 Golden Gate Park Stanyan Street Frontage Improvements Project	8	0	0%	0	0	0%
1000013070 Golden Gate Park Tennis Center (Package B)	2,231	1,430	64%	136	136	100%
1000013376(R) George Christopher Playground Renovation (Rebid)	2,939	1,357	46%	98	10	10%
1000013709 West Portal Playground Renovation	3	3	100%	0	0	0%
1000015032 Juri Commons Renovation	3,337	1,123	34%	133	59	44%
1000016635 Golden Gate Heights Playground & Field Renovation	3,284	1,748	53%	157	45	28%
1000022273 Rec-Con21-0041 South Sunset Fields Renovation Project	2,395	315	13%	85	85	100%
TOTAL	19,914	8,584	43%	859	369	43%

Private Projects Under Development Agreements

Projects under development agreements are subject to an overall 30% local hiring requirement, as well as a 30% local hiring requirement for apprentices.

Trade	Total Hours			Apprentice Hours		
	Total	Local	Local %	Total	Local	Local %
Asbestos Removal Worker	29,536	5,024	17%	0	0	0%
Asbestos Worker, Heat and Frost	686	52	8%	92	52	57%
Bricklayer, Blocklayer	5,098	179	4%	412	0	0%
Bricktender	375	0	0%	0	0	0%
Building/Construction Inspector and	17	0	0%	0	0	0%
Carpenter and Related Trades	101,213	19,078	19%	19,113	8,081	42%
Carpet, Linoleum	204	11	5%	120	11	9%
Cement Mason	19,182	1,789	9%	2,625	742	28%
Driver	5,805	2,008	35%	0	0	0%
Drywall Installer/Lather	29,343	3,345	11%	5,930	1,043	18%
Electrical Utility Lineman	2,139	0	0%	138	0	0%
Electrician	45,774	6,641	15%	5,195	1,734	33%
Elevator Constructor	2,567	0	0%	1,144	0	0%
Field Surveyor	1,600	190	12%	255	103	40%
Glazier	5,416	854	16%	791	0	0%
Iron Worker	106,729	39,386	37%	28,462	15,947	56%

Private Projects Under Development Agreements

Trade	Total Hours			Apprentice Hours		
	Total	Local	Local %	Total	Local	Local %
Laborer and Related Classifications	142,184	41,897	29%	6,372	4,794	75%
Operating Engineer	34,568	8,647	25%	1,296	418	32%
Painter	16,401	2,375	14%	4,142	599	14%
Parking and Highway Improvement	132	36	27%	36	36	100%
Pile Driver	25,747	4,715	18%	2,577	1,258	49%
Plaster Tender	6,603	1,567	24%	0	0	0%
Plasterer	2,089	314	15%	314	314	100%
Plumber	30,396	10,460	34%	9,249	5,303	57%
Roofer	17,753	3,748	21%	5,121	2,085	41%
Sheet Metal Worker	4,924	54	1%	837	50	6%
Teamster	731	69	9%	0	0	0%
Tile Finisher	502	0	0%	64	0	0%
Tile Setter	710	0	0%	264	0	0%
Traffic Control/Lane Closure	262	0	0%	0	0	0%
Tunnel Worker (Laborer)	284	0	0%	0	0	0%
TOTAL	638,969	152,436	24%	94,547	42,567	45%

Private Projects Under Development Agreements

Project	Total Hours			Apprentice Hours		
	Total	Local	Local %	Total	Local	Local %
30 Van Ness Early Works	41,707	8,818	21%	1,847	1,293	70%
FC Pier 70 Building 12	186,854	50,045	27%	38,882	16,674	43%
FC Pier 70 LLC Horizontal Construction	29,248	5,903	20%	1,573	360	23%
Mission Rock Horizontal Sub (Phase 1)	59,011	22,100	37%	3,087	2,292	74%
Mission Rock Parcel A	134,048	19,357	14%	22,380	9,458	42%
Mission Rock Parcel B	33,056	9,707	29%	5,424	2,594	48%
Mission Rock Parcel G	151,967	34,947	23%	20,786	9,611	46%
Mission Rock Vertical Sub (Phase 1)	1,086	278	26%	228	0	0%
PPS Power Station Horizontal Construction Project - Local Hire	1,994	1,282	64%	341	287	84%
TOTAL	638,969	152,436	24%	94,547	42,567	45%

Mayor's Office of Housing and Community Development

Trade	Total Hours			Apprentice Hours		
	Total	Local	Local %	Total	Local	Local %
Asbestos Removal Worker	103	0	0%	0	0	0%
Asbestos Worker, Heat and Frost	1,717	252	15%	364	182	50%
Bricklayer, Blocklayer	1,641	439	27%	248	0	0%
Building/Construction Inspector and	24	0	0%	0	0	0%
Carpenter and Related Trades	100,436	26,034	26%	31,639	14,329	45%
Carpet, Linoleum	2,194	116	5%	400	56	14%
Cement Mason	5,901	99	2%	634	26	4%
Driver	4,157	693	17%	0	0	0%
Drywall Installer/Lather	37,252	4,980	13%	8,147	1,732	21%
Electrician	51,099	15,510	30%	15,801	4,936	31%
Elevator Constructor	225	0	0%	128	0	0%
Field Surveyor	1,159	311	27%	51	5	10%
Glazier	7,602	1,051	14%	1,899	291	15%
Iron Worker	20,210	1,474	7%	6,451	1,406	22%

Mayor's Office of Housing and Community Development

Trade	Total Hours			Apprentice Hours		
	Total	Local	Local %	Total	Local	Local %
Laborer and Related Classifications	68,933	23,688	34%	5,627	3,478	62%
Modular Furniture Installer	132	0	0%	0	0	0%
Operating Engineer	17,643	4,583	26%	685	259	38%
Painter	12,720	3,088	24%	2,332	530	23%
Pile Driver	538	81	15%	121	81	67%
Plaster Tender	143	8	6%	0	0	0%
Plasterer	1,561	134	9%	326	16	5%
Plumber	31,291	6,440	21%	8,924	2,651	30%
Roofer	15,248	1,899	12%	4,506	257	6%
Sheet Metal Worker	14,932	5,436	36%	3,420	1,428	42%
Terrazzo Worker	1,517	16	1%	158	16	10%
Tile Finisher	1,161	0	0%	207	0	0%
Tile Setter	1,455	0	0%	302	0	0%
TOTAL	400,990	96,329	24%	92,368	31,677	34%

Mayor's Office of Housing and Community Development

Project	Total Hours			Apprentice Hours		
	Total	Local	Local %	Total	Local	Local %
1064 Mission	139,901	35,046	25%	32,587	12,161	37%
1064 Mission Clinic	22,822	4,320	19%	6,281	2,021	32%
2340 San Jose Avenue	30,267	8,401	28%	5,156	2,369	46%
4840 Mission Street Vertical	17,003	5,109	30%	2,518	775	31%
681 Florida - 2	136,768	33,074	24%	36,040	12,233	34%
735 Davis	6,988	1,929	28%	725	217	30%
88 Broadway	47,241	8,451	18%	9,063	1,903	21%
TOTAL	400,990	96,329	24%	92,368	31,677	45%

Local Hiring By Contractor – All Covered Projects

Contractor	Total Hours			Apprentice Hours		
	Total	Local	Local %	Total	Local	Local %
415 Electric, Inc.	1,263	727	58%	0	0	0%
6m Transport Services	32	0	0%	0	0	0%
711 Materials, Inc.	3	0	0%	0	0	0%
A & B Construction	6,148	3,706	60%	76	24	32%
A&D Automatic Gate Company	46	0	0%	0	0	0%
A. Ruiz Construction Co. & Assoc., Inc.	14,156	7,123	50%	524	524	100%
ASF Electric Inc.	12	0	0%	0	0	0%
A1 Quality Blinds	8	0	0%	0	0	0%
AAA Fence Company, Inc.	1,194	0	0%	0	0	0%
AAA Fire Protection Services	17	0	0%	0	0	0%
AAC Glass, Inc.	2,216	264	12%	976	264	27%
ABCO Mechanical Contractors Inc.	728	146	20%	184	80	43%
ABM Electrical Power Services, LLC	3	0	0%	0	0	0%
Access Systems & Solutions, Inc.	176	0	0%	0	0	0%
ACCO Engineered Systems	10,544	3,604	34%	2,138	1,494	70%
Accurate Firestop	2,482	0	0%	1,559	0	0%
Ace Drilling & Excavation	2,227	9	0%	0	0	0%
Aero Bridgeworks, Inc.	98	0	0%	0	0	0%
Ahlborn Fence & Steel, Inc.	202	32	16%	32	32	100%
Ahlborn Structural Steel	1,709	80	5%	179	80	44%
Air Systems Inc.	38	0	0%	0	0	0%
Air Systems, Inc.	833	35	4%	116	35	30%
AJs Painting Decorating	2,732	1,419	52%	88	88	100%
Alaniz Construction Inc.	44	0	0%	0	0	0%
Alcal Specialty Contracting, Inc.	3,262	671	21%	946	143	15%

Local Hiring By Contractor – All Covered Projects

Contractor	Total Hours			Apprentice Hours		
	Total	Local	Local %	Total	Local	Local %
Aldridge Electric	500	258	52%	74	0	0%
Alliance Roofing Company, Inc.	8,461	1,246	15%	2,070	616	30%
Allied Fire Protection	5,693	2,457	43%	1,061	673	63%
Alta Engineering Group Inc.	2,675	482	18%	261	28	11%
Alta Engineering Group, Inc.	697	401	57%	203	0	0%
American Civil Constructors West Coast LLC	873	0	0%	0	0	0%
American Crane Rental Inc.	40	40	100%	0	0	0%
American Terrazzo Co.	22,014	2,768	13%	2,349	994	42%
American Tile & Brick Veneer, Inc.	5,218	1,109	21%	2,502	1,109	44%
Ams Electric, Inc. DBA Prime Electric, Inc.	62	0	0%	0	0	0%
Anco Iron & Construction Inc.	389	215	55%	0	0	0%
Anco Iron & Constrution Inc.	2,707	1,026	38%	632	414	66%
Anderson Commercial Flooring	1,318	110	8%	152	0	0%
Anderson Commercial Flooring.	310	36	12%	16	16	100%
Anderson Roofing & Sheet Metal Co., Inc.	51	7	14%	0	0	0%
Anning-Johnson Company - Hayward	20,115	5,571	28%	3,712	2,536	68%
Anvil Builders	83,818	26,642	32%	7,518	4,516	60%
Apache Industrial	44	0	0%	4	0	0%
Apex Testing Laboratories, Inc.	513	67	13%	8	0	0%
Aqua Proof, Inc.	5,088	1,443	28%	1,254	0	0%
Aqua Proof, Inc.	97	97	100%	47	47	100%
Arborist Now, Inc.	6,648	2,058	31%	0	0	0%
Architectural Design & Signs	12	0	0%	0	0	0%
Architectural Glass & Aluminum Co., Inc.	36,351	6,592	18%	14,249	4,115	29%
Argo Construction, Inc.	152	152	100%	0	0	0%

Local Hiring By Contractor – All Covered Projects

Contractor	Total Hours			Apprentice Hours		
	Total	Local	Local %	Total	Local	Local %
Arktos Incorporated	12	0	0%	8	0	0%
Art Alger Inc., DBA Peninsula Crane & Rigging	55	6	11%	9	0	0%
Asbestos Management Group	487	0	0%	0	0	0%
Asphalt Impressions	30	0	0%	10	0	0%
Associated Terrazzo Company, Inc.	9,688	0	0%	175	0	0%
Automated Services And Products, Inc	65	0	0%	0	0	0%
Azul Works Inc	3,801	2,585	68%	160	160	100%
B Metal Fabrication, Inc.	40	0	0%	22	0	0%
B&C Painting & Decorating	738	738	100%	260	260	100%
B&C/Jts Painting	10,421	2,359	23%	3,129	599	19%
B. T. Mancini Co., Inc	107	0	0%	52	0	0%
B. T. Mancini Co., Inc.	2,541	0	0%	332	0	0%
Babak Trucking, Inc.	418	0	0%	0	0	0%
Bacon Plumbing Co., Inc.	1,483	752	51%	696	591	85%
Badger Daylighting Corp.	801	0	0%	0	0	0%
Baf Specialty Inc.	7,638	0	0%	1,290	0	0%
Bailey Fence Company, Inc.	1,231	0	0%	0	0	0%
Baird Trucking, Inc.	4,049	1,390	34%	0	0	0%
Bannon Construction Inc	399	123	31%	0	0	0%
Barri Electric Company, Inc.	1,867	1,711	92%	869	869	100%
Bart-Bek Plus 4 Inc. DBA Kca Engineers Inc.	341	10	3%	18	0	0%
Barth Modular Construction Inc	68	8	12%	51	8	16%
Bass Electric	153	153	100%	0	0	0%
Basset Engineering	2,348	1,733	74%	192	184	96%
Battalion One Fire Protection	267	262	98%	126	126	100%

Local Hiring By Contractor – All Covered Projects

Contractor	Total Hours			Apprentice Hours		
	Total	Local	Local %	Total	Local	Local %
Bauman Landscape And Construction	103,996	21,392	21%	2,448	803	33%
Bauman Redi-Mix Concrete LLC	41	9	21%	0	0	0%
Bay Area Arborist Cooperative, Inc.	1,969	1,640	83%	0	0	0%
Bay Area Concretes, Inc.	108	0	0%	16	0	0%
Bay Area Lightworks, Inc.	3,495	2,197	63%	563	563	100%
Bay City Inc.	57	0	0%	0	0	0%
Bay City Mechanical, Inc	14,921	5,201	35%	3,616	1,428	39%
Bay Engineering, LLC	4,536	3,718	82%	107	107	100%
Bay Line Cutting & Coring, Inc.	1,759	583	33%	64	0	0%
Bay Tech Engineering, Inc.	1,492	536	36%	149	0	0%
Bayside Insulation, Inc.	24	0	0%	12	0	0%
Bay-Tech Electric	77	7	9%	0	0	0%
Bayview Environmental Services, Inc.	2,002	521	26%	0	0	0%
Bbj Electric Inc	1,415	815	58%	584	302	52%
Bce Specialties Inc	17	0	0%	0	0	0%
Bear Scaffold And Services	1,012	176	17%	231	176	76%
Beci Electric Inc	91	0	0%	0	0	0%
Becker Electric Inc.	15,338	5,529	36%	4,508	2,742	61%
Bei Steel, Inc.	8,902	3,401	38%	3,857	1,863	48%
Bellant Plumbing Inc.	178	7	4%	39	7	18%
Berkeley Cement	2,580	477	18%	329	223	68%
Berkeley Concrete Pumping	77	23	30%	0	0	0%
Bertco, Inc.	41,586	20,764	50%	4,497	2,943	65%
Bess Testlab, Inc	14	0	0%	0	0	0%
Best Roofing & Waterproofing, Inc. dba Best Contrac	1,829	286	16%	306	116	38%

Local Hiring By Contractor – All Covered Projects

Contractor	Total Hours			Apprentice Hours		
	Total	Local	Local %	Total	Local	Local %
Better Way Constructors	173	159	92%	0	0	0%
Big Pipe Mechanical	1,200	426	36%	295	295	100%
Big Valley Electric	896	562	63%	398	398	100%
Bigge Crane & Rigging	470	317	67%	12	0	0%
Bigge Crane & Rigging Co.	2,089	0	0%	15	0	0%
Bigge Crane And Rigging Co	9,768	0	0%	82	0	0%
Bird Busters, Inc	24	0	0%	0	0	0%
Bkf Engineers	342	102	30%	110	102	93%
Blackwell General Engineering, Inc.	128	0	0%	0	0	0%
Blas Trucking	36	13	36%	0	0	0%
Blocka Construction	3,279	776	24%	219	35	16%
Blue Iron Foundations & Shoring, Inc.	2,775	488	18%	490	474	97%
Bluewater Environmental Service, Inc.	508	0	0%	0	0	0%
Bobcomm Inc. Pacific Das	48	0	0%	0	0	0%
Boyett Construction, Inc.	280	70	25%	8	0	0%
Bradcon LLC DBA: Bradley Concrete	11,896	1,408	12%	725	0	0%
Bradley Tanks Inc.	100	0	0%	0	0	0%
Brady Air Conditioning	318	288	90%	176	176	100%
Bragato Paving Company, Inc.	184	0	0%	0	0	0%
Bragg Crane Service	69	0	0%	0	0	0%
Brandsafway Services, LLC.- Benicia, Ca	2,715	1,282	47%	875	692	79%
Brayer Electric Company	46,886	14,473	31%	15,365	4,923	32%
Brightview Landscape Development, Inc.	460	0	0%	0	0	0%
Buhler Commercial	4,257	171	4%	1,480	0	0%
Bullard's Heating & Air Inc	4,454	1,525	34%	474	120	25%

Local Hiring By Contractor – All Covered Projects

Contractor	Total Hours			Apprentice Hours		
	Total	Local	Local %	Total	Local	Local %
By Design Steel Services, Inc.	114	0	0%	0	0	0%
C I W And Sons Plumbing	2,084	2,084	100%	879	879	100%
C M & B Inc DBA Mauck Sheet Metal	15	0	0%	0	0	0%
C R Fence Inc DBA Humboldt Fence Co	156	0	0%	0	0	0%
C. E. Toland & Son	2,815	874	31%	1,005	0	0%
C/S Erectors Inc.	63	8	13%	8	0	0%
Cabinet Brokers Installation Inc.	237	0	0%	0	0	0%
Cahill Contractors LLC	57,209	15,673	27%	10,197	3,723	37%
Cal Pacific Constr. Inc.	1,965	1,610	82%	0	0	0%
Cal State Constructors, Inc.	1,889	1,121	59%	0	0	0%
Cal Transline Inc	7	0	0%	0	0	0%
Cal West Concrete Cutting Inc.	23	0	0%	4	0	0%
California Custom Metals Inc	5,127	363	7%	879	363	41%
California Drywall Company	7,607	1,754	23%	3,390	1,691	50%
California Environmental Systems, Inc	39	0	0%	16	0	0%
Camajani Trucking	5,563	3,346	60%	0	0	0%
Camblin Steel Service Inc.	1,031	500	48%	157	62	39%
Can-Am Construction Cleanup	1,145	162	14%	162	162	100%
Canning Electric Inc	44	36	82%	8	0	0%
Canvas Construction Services, LLC	490	249	51%	131	67	51%
Capax Group, Inc.	3,172	20	1%	0	0	0%
Capital Building Maintenance Group	856	160	19%	152	152	100%
Capitol Builders Hardware, Inc.	2,901	46	2%	117	0	0%
Capitol Electric	137	38	28%	0	0	0%
Capitol Glass Company	8,592	892	10%	1,222	36	3%

Local Hiring By Contractor – All Covered Projects

Contractor	Total Hours			Apprentice Hours		
	Total	Local	Local %	Total	Local	Local %
Carney's Plastering	3,088	1,096	35%	386	269	70%
Castle Concrete Pumping, Inc	293	0	0%	0	0	0%
Catmex	222	222	100%	0	0	0%
Cazadoro Construction, Inc	5,312	2,275	43%	0	0	0%
CBF, Inc.	439	8	2%	0	0	0%
CBI Services, LLC	5,274	853	16%	259	47	18%
CBR Services, Inc DBA Bakers Floor And Surface	256	120	47%	0	0	0%
Cell-Crete Corporation	4,683	0	0%	457	0	0%
Celtic Scaffolding Inc.	381	176	46%	159	0	0%
Cemex Construction Material Pacific LLC	1,701	395	23%	0	0	0%
Cemex. Inc.	1,269	328	26%	0	0	0%
Central Concrete Supply	157	31	20%	0	0	0%
Central Concrete Supply Co., Inc.	6,866	1,095	16%	0	0	0%
Cf Archibald Paving Inc.	601	187	31%	31	31	100%
Cf Contracting, Inc.	2,620	2,616	100%	840	840	100%
CF&T Concrete Pumping	23	0	0%	0	0	0%
Champion Contractors, Inc.	6,776	1,257	19%	1,517	660	43%
Charles F Gagliasso Trucking, Inc.	30	30	100%	0	0	0%
Charles Pankow Builders, Ltd.	11,268	7,264	64%	2,211	1,987	90%
Charles Pankow Concrete	1,616	380	24%	82	50	61%
Chohan Trucking Inc	7	0	0%	0	0	0%
Chrisp Company	173	0	0%	35	0	0%
Christian Brothers Lining, Co.	152	0	0%	17	0	0%
Cic Company	165	0	0%	0	0	0%
City Lumber & Hardware, Inc., DBA City Door & Hardware	16	16	100%	0	0	0%

Local Hiring By Contractor – All Covered Projects

Contractor	Total Hours			Apprentice Hours		
	Total	Local	Local %	Total	Local	Local %
Clark Construction Group - California, Lp	805	32	4%	0	0	0%
Clark Pacific	6,648	0	0%	1,206	0	0%
Cleansweep Services, Inc	17	0	0%	0	0	0%
Cleansweep Services, Inc.	1,422	0	0%	0	0	0%
Clear Creek Systems, Inc	494	0	0%	0	0	0%
Clw Builders, Inc.	219	219	100%	0	0	0%
Cmc Rebar	3,449	1,276	37%	1,056	375	36%
Cmc Steel Fabricators Inc DBA Cmc Rebar	10,159	2,533	25%	2,458	906	37%
Cmc Traffic Control Specialists DBA Cmc Construction	7,558	4,751	63%	144	112	78%
Cml Security	8	0	0%	0	0	0%
Coast 2 Coast Drywall	5,320	148	3%	63	0	0%
Coast Building Products	892	0	0%	44	0	0%
Coats Plumbing	46	16	35%	0	0	0%
Cobra Trucking, Inc.	714	240	34%	0	0	0%
Comfort Air Mechanical Systems	292	0	0%	111	0	0%
Commercial Power Sweep, Inc.	81	0	0%	0	0	0%
Commercial Scaffolding Of Ca, Inc.	1,576	314	20%	712	161	23%
Community Playgrounds, Inc.	468	37	8%	37	37	100%
Compactor Management Company, LLC	41	0	0%	0	0	0%
Compass Engineering Contractors, Inc	5	0	0%	0	0	0%
Compass Engineering Contractors, Inc.	131	0	0%	21	0	0%
Comtel Systems Technology, Inc	738	48	7%	0	0	0%
Conco Cement Company	22	0	0%	7	0	0%
Concreteworks	366	0	0%	0	0	0%
Condon-Johnson & Associates Inc	9,218	585	6%	1,330	298	22%

Local Hiring By Contractor – All Covered Projects

Contractor	Total Hours			Apprentice Hours		
	Total	Local	Local %	Total	Local	Local %
Contra Costa Door Co.	276	28	10%	28	28	100%
Contra Costa Electric, Inc.	109	0	0%	0	0	0%
Control Air Enterprises LLC	128	0	0%	4	0	0%
Control Solutions Inc	112	0	0%	0	0	0%
Coral Construction Company	55	0	0%	0	0	0%
Core Erectors Ca LLC	360	7	2%	21	7	33%
Cosco Fire Protection, Inc.	953	16	2%	16	16	100%
Courtney Inc.	8,309	145	2%	2,951	87	3%
Cpm Environmental, Inc.	3,224	20	1%	0	0	0%
Crana Trucking, LLC	7	7	100%	0	0	0%
Craneveyor Corp.	218	0	0%	70	0	0%
Cratus Inc.	36,252	19,813	55%	5,313	4,496	85%
Creative Ceilings Inc.	552	16	3%	129	16	12%
Creative Shower Door Corp	6	0	0%	0	0	0%
Critchfield Mechanical, Inc.	4,740	1,596	34%	1,419	794	56%
Critchfield Mechanical, Inc. (CMI)	2,465	208	8%	665	208	31%
Crown Sheet Metal & Skylights, Inc	26	7	27%	0	0	0%
Crusader Fence Company LLC	152	0	0%	58	0	0%
Cunha Surveying, Inc.	15	0	0%	0	0	0%
Cupertino Electric Inc.	78,754	13,520	17%	5,205	1,732	33%
Custom Fire Protection	63	0	0%	28	0	0%
CW Acoustics, Inc. DBA Cal West Acoustics	479	0	0%	139	0	0%
D & J Tile Company, Inc.	72	0	0%	0	0	0%
D W Nicholson Corporation	4	0	0%	0	0	0%
Daley's Drywall & Taping, Inc.	25,186	5,642	22%	5,728	2,468	43%

Local Hiring By Contractor – All Covered Projects

Contractor	Total Hours			Apprentice Hours		
	Total	Local	Local %	Total	Local	Local %
Daly Pipelines, Inc.	320	72	23%	72	72	100%
D'arcy & Harty Construction, Inc.	6,248	2,924	47%	667	667	100%
Darden Painting, Inc.	4,427	1,394	31%	711	0	0%
David M Schmitt	376	129	34%	127	40	31%
Dc Tile	18	0	0%	0	0	0%
De Haro Ramirez Group	3,656	950	26%	618	493	80%
Dees-Hennessey, Inc.	167	8	5%	8	8	100%
Del Monte Electric Co Inc.	14,643	6,319	43%	4,521	4,366	97%
Del Secco Diamond Core & Saw, Inc.	27	4	15%	0	0	0%
Delao Electric Inc.	460	297	64%	142	142	100%
Delta Bay Waterproofing	34	0	0%	15	0	0%
Delta Grinding Co., Inc. DBA Diablo Grinding Inc.	187	0	0%	0	0	0%
Designers Surfaces LLC DBA Nex Systems	12	0	0%	0	0	0%
Desilva Gates Construction	159	91	57%	10	0	0%
Detail Ironworks Inc.	2,905	1,477	51%	0	0	0%
DFS Commercial, Inc.	790	80	10%	232	40	17%
Diamond Fence Co.	6	0	0%	0	0	0%
Digital Concrete Scanning Services	17	0	0%	0	0	0%
Dli Mechanical, Inc.	105	105	100%	0	0	0%
Dms Drywall & Interior Systems Inc.	2,207	670	30%	680	184	27%
Dmz Builders	2,029	0	0%	212	0	0%
Dolan Concrete Construction	447	24	5%	32	8	25%
Dowdle & Sons Mechanical Inc.	3,233	1,718	53%	904	666	74%
Drill Tech	1,565	279	18%	147	0	0%
Drill Tech Drilling & Shoring, Inc.	21,816	3,605	17%	1,512	653	43%

Local Hiring By Contractor – All Covered Projects

Contractor	Total Hours			Apprentice Hours		
	Total	Local	Local %	Total	Local	Local %
Duran & Venables, Inc.	1,879	747	40%	344	64	19%
E. Mitchell, Inc.	390	0	0%	0	0	0%
E.F. Brett And Company, Inc.	664	0	0%	16	0	0%
E.J. Weber Electric Company	1,609	419	26%	7	0	0%
Eco Bay Services, Inc.	3,983	1,215	31%	203	174	86%
Eco Fire Sprinklers, Inc.	63	0	0%	3	0	0%
Egan Plumbing, Inc.	1,240	727	59%	326	326	100%
Eggli Landscape Contractors, Inc.	6,502	4,872	75%	440	0	0%
Eighteen Trucking	96	0	0%	0	0	0%
Eighteen Trucking, Inc.	12,770	1,527	12%	0	0	0%
EKC Enterprises Inc.	84	0	0%	0	0	0%
Electrical Reliability Services	112	0	0%	7	0	0%
Electronic Innovations, Inc.	56	6	11%	0	0	0%
Elevator Industries Inc.	650	0	0%	297	0	0%
Elite Ready Mix	50	0	0%	0	0	0%
Emcor Services Mesa Energy	3,262	68	2%	45	36	80%
Empire Engineering & Construction Inc.	160	64	40%	0	0	0%
Engel Holdings, Inc. DBA Safway Atlantic	2,474	1,274	51%	133	0	0%
Environmental Systems, Inc. of Northern California	449	449	100%	104	104	100%
Enviser	2,394	1,228	51%	0	0	0%
EPS Inc. DBA Express Plumbing	123	73	59%	24	0	0%
Esquivel Grading & Paving, Inc.	10,084	2,926	29%	742	469	63%
Estes Commercial Refrigeration, Inc.	11	0	0%	0	0	0%
European Paving Designs, Inc.	1,793	48	3%	48	0	0%
Evan Corporation	16	16	100%	0	0	0%

Local Hiring By Contractor – All Covered Projects

Contractor	Total Hours			Apprentice Hours		
	Total	Local	Local %	Total	Local	Local %
Evans Brothers Inc	3,699	112	3%	0	0	0%
Evra Construction Inc	665	516	78%	0	0	0%
Excel Lathing	7	0	0%	7	0	0%
Expert Plumbing Solutions	108	108	100%	0	0	0%
Express Concrete Breaking & Cutting	48	2	4%	0	0	0%
F.D. Thomas, Inc.	14,650	602	4%	2,026	602	30%
F3 & Associates Inc.	3,653	0	0%	197	0	0%
Farrell Design-Build Companies, Inc.	2,203	885	40%	548	291	53%
Farwest Insulation Contracting	784	0	0%	298	0	0%
Fashion Drapery	88	88	100%	0	0	0%
Fbd Vanguard Construction Inc	441	0	0%	0	0	0%
Felix Epoxy Floors Inc	248	0	0%	0	0	0%
Fencecorp, Inc.	374	0	0%	140	0	0%
Fidato	14,518	10,960	75%	4,974	4,974	100%
Field Turf USA	295	79	27%	79	79	100%
Finnco Services Inc.	2,221	33	1%	109	0	0%
Firestop Specialties Inc.	109	0	0%	0	0	0%
Fischer Tile & Marble Inc.	35	0	0%	0	0	0%
Fisher Development, Inc.	2,998	148	5%	0	0	0%
Floor Seal Technology	1,610	11	1%	254	11	4%
Florian Industries, Inc.	1,972	0	0%	401	0	0%
Fontenoy Engineering, Inc.	33,336	20,024	60%	4,505	4,496	100%
Foundation Constructors, Inc	23,197	4,263	18%	2,139	1,135	53%
Frank M Booth, Inc.	17,057	4,337	25%	5,774	3,781	65%
Fremouw Environmental Services	4	0	0%	0	0	0%

Local Hiring By Contractor – All Covered Projects

Contractor	Total Hours			Apprentice Hours		
	Total	Local	Local %	Total	Local	Local %
Frontier Building Products Pacific	259	0	0%	0	0	0%
G & M Appliance Supply, Inc.	328	214	65%	0	0	0%
G&J Trans LLC	7	0	0%	0	0	0%
G. Y. Engineering Company, Inc	195	78	40%	0	0	0%
G3 Quality, Inc.	35	0	0%	0	0	0%
Gamma Rebar, Inc.	152	0	0%	64	0	0%
Garrison Demolition And Engineering Inc.	272	24	9%	0	0	0%
GCU Trucking	6	6	100%	0	0	0%
GECMS Inc	2,674	1,304	49%	0	0	0%
Gehweiler Coporation DBA Greenscape	70	0	0%	0	0	0%
Geo-Instruments, Inc.	9	0	0%	0	0	0%
George E. Masker, Inc	9,440	2,516	27%	1,835	192	10%
George Family Norcal	25	0	0%	0	0	0%
Ghilotti Bros., Inc.	2,201	32	1%	29	0	0%
Giampolini-Courtney	20	0	0%	0	0	0%
Gino Rinaldi, Inc.	1,116	0	0%	328	0	0%
GIR Trucking	6	0	0%	0	0	0%
Gizmo Art Production, Inc.	5	5	100%	0	0	0%
Global Road Sealing, Inc.	527	0	0%	153	0	0%
Global Specialties Direct	237	0	0%	0	0	0%
Golden Bay Construction, Inc.	936	748	80%	0	0	0%
Golden Bay Fence Plus Iron Works, Inc.	1,022	0	0%	0	0	0%
Golden Bay Trans Inc.	6	0	0%	0	0	0%
Golden Gate Constructors	1,688	584	35%	0	0	0%
Golden Gate Trans, Inc.	12	0	0%	0	0	0%

Local Hiring By Contractor – All Covered Projects

Contractor	Total Hours			Apprentice Hours		
	Total	Local	Local %	Total	Local	Local %
Golden State Steel & Stair, Inc.	1,297	16	1%	190	16	8%
Gordon N Ball Inc	243	64	26%	109	40	37%
Gordon Plastering Inc	5,073	1,015	20%	0	0	0%
Gorman Pipeline Inc	35	11	30%	0	0	0%
Granite Rock Company	599	64	11%	10	0	0%
Green Growth Industries	3,098	224	7%	360	40	11%
Greg's Trucking Service, Inc.	67	0	0%	0	0	0%
Griffin Soil	127	26	20%	0	0	0%
Ground Control, Inc.	5,869	2,025	35%	256	256	100%
Guzman Construction Group, Inc.	2,563	2,417	94%	120	120	100%
H&M Fire Protection, Inc.	2,848	1,346	47%	921	921	100%
Hansford Industries Inc, DBA Viking	2,927	200	7%	176	88	50%
Harmon Trucking LLC	185	185	100%	0	0	0%
Harris Hoisting	5,039	3,215	64%	713	0	0%
Harrison Drywall Inc.	94	12	13%	20	0	0%
Harry L. Murphy, Inc.	1,402	8	1%	375	8	2%
Harty Pipelines, Inc	2,012	758	38%	389	138	35%
Hathaway Dinwiddie/Nibbi Joint	28,081	13,917	50%	2,935	2,257	77%
Hatton's Crane & Rigging Inc	346	4	1%	0	0	0%
Heath Tractor	292	0	0%	0	0	0%
Hensel Phelps Construction Co Inc	35,007	5,923	17%	1,215	17	1%
Hi-Voltage Splicing Co., Inc.	18	0	0%	0	0	0%
Hoem & Associates, Inc	74	0	0%	0	0	0%
Honeywell International Inc	24	0	0%	0	0	0%
Hoseley Corporation	25,338	12,957	51%	2,604	2,604	100%

Local Hiring By Contractor – All Covered Projects

Contractor	Total Hours			Apprentice Hours		
	Total	Local	Local %	Total	Local	Local %
Hot Line Construction, Inc.	2,139	0	0%	138	0	0%
HVYW8 Trucking	20,629	9,509	46%	0	0	0%
ICOM Mechanical Inc.	2,384	306	13%	614	0	0%
ICS - Integrated Communication Systems	1,229	0	0%	0	0	0%
Insituform Technologies, LLC	1,882	0	0%	0	0	0%
Installit, Inc.	232	13	5%	24	0	0%
Integrated Sign Installations Inc.	213	53	25%	106	53	50%
Intelligent Technologies and Services, Inc.	297	0	0%	0	0	0%
Intermountain Electric Company	1,777	967	54%	0	0	0%
Interstate Concrete Pumping	1,229	0	0%	0	0	0%
Interstate Grading & Paving Inc.	1,154	211	18%	131	18	14%
Intrepid Electronic Systems, Inc.	145	0	0%	8	0	0%
ISEC Inc. - FREMONT, CA	7,377	1,079	15%	932	267	29%
ISEC, Inc.	4,502	1,468	33%	984	898	91%
ISEC, Inc. - Englewood, CO	5,563	290	5%	902	196	22%
J D Berglund Group D DBA Armour Fence	967	24	2%	308	24	8%
J Hart Plumbing Inc.	27	27	100%	8	8	100%
J&J Transportation	848	848	100%	0	0	0%
J. Flores Construction Company, Inc.	27,400	13,414	49%	2,246	1,632	73%
J.C. Metal Specialists, Inc.	36	24	67%	0	0	0%
J.W. McClenahan Co.	335	0	0%	0	0	0%
Janus Corporation - Concord, CA	478	40	8%	0	0	0%
JD Firestop Pros, Inc.	155	80	52%	32	16	50%
JDB & Sons Construction Inc.	16,449	11,520	70%	169	169	100%
Jeffco Painting & Coating, Inc.	3,483	420	12%	526	0	0%

Local Hiring By Contractor – All Covered Projects

Contractor	Total Hours			Apprentice Hours		
	Total	Local	Local %	Total	Local	Local %
Jensen Landscape Contractor, LLC	39	0	0%	0	0	0%
Jerry Thompson & Sons Painting	15	0	0%	0	0	0%
Jet Terminal Services, Inc.	1,729	304	18%	0	0	0%
Jmb Construction Inc	40,344	15,643	39%	3,561	2,490	70%
John Bertoldi Incorporated	154	146	95%	0	0	0%
John Jackson Masonry	222	0	0%	8	0	0%
Johnson Controls Fire Protection Lp	888	0	0%	0	0	0%
Jones Tile And Marble Inc	21	0	0%	0	0	0%
Joseph J Albanese Inc	10,235	1,281	13%	1,793	586	33%
Jr Monterrosa, Inc	8	8	100%	0	0	0%
Jtk Electric, Inc DBA Sunflower	1,075	153	14%	0	0	0%
Justipher Inc., DBA Fastsigns	14	0	0%	0	0	0%
K.j. Woods Construction, Inc.	16,318	6,245	38%	2,424	1,868	77%
Kbi Painting, Inc.	253	8	3%	71	8	11%
Kearney Plumbing, Inc.	196	164	84%	0	0	0%
Kevin Powell Inc (DBA) Powell's	5	0	0%	0	0	0%
Khs&S Contractors	29,134	10,026	34%	8,377	3,006	36%
Kim's Flooring, Inc.	8	0	0%	0	0	0%
King Crane Service	16	0	0%	8	0	0%
Kingdom Pipelines, Inc.	1,336	395	30%	0	0	0%
Klw Construction, Inc.	660	660	100%	0	0	0%
Km 106 Construction Inc	16	0	0%	0	0	0%
Kone Inc. - San Leandro	952	2	0%	8	0	0%
Kone, Inc.	9,571	3	0%	4,238	0	0%
Korotkin Associates.com	1,335	929	70%	0	0	0%

Local Hiring By Contractor – All Covered Projects

Contractor	Total Hours			Apprentice Hours		
	Total	Local	Local %	Total	Local	Local %
KR Surface Industries, Inc.	540	139	26%	0	0	0%
Kroner Environmental Services, Inc.	100	0	0%	0	0	0%
KSM Structural Steel	32	32	100%	0	0	0%
Kwan Wo Ironworks	33,421	25,477	76%	12,830	10,449	81%
L C General Engineering & Construction, Inc.	743	417	56%	0	0	0%
Largo Concrete, Inc.	41,658	13,374	32%	11,115	6,785	61%
Larratt Bros. Plumbing, Inc.	100	55	55%	0	0	0%
Lavina Trucking, Inc.	655	400	61%	0	0	0%
Lawson Roofing, Co., Inc.	3,275	1,183	36%	647	485	75%
LCE Transport, Inc.	2,380	1,603	67%	0	0	0%
Leeg And Company, Inc.	38	0	0%	0	0	0%
Lefevre Welding	72	0	0%	0	0	0%
Lescure Company, Inc.	2,488	1,351	54%	857	832	97%
Level 5 Inc.	4,530	3	0%	222	0	0%
Lewis M. Merlo Inc.	24	0	0%	0	0	0%
Liberty Electric Of San Mateo, Inc.	16,567	8,166	49%	1	1	100%
Liffey Electric	13,357	5,275	39%	1,756	371	21%
Lincoln Glass & Mirror	16	0	0%	4	0	0%
Lloyd W. Aubry Company, Inc.	7,642	0	0%	1,285	0	0%
Lombardo Diamond Core Drilling Co., Inc.	412	0	0%	12	0	0%
Lou's Concrete Sawing-Breaking	215	0	0%	0	0	0%
Lowy Fire Protection, Inc.	32	0	0%	0	0	0%
Luk And Associates	193	85	44%	0	0	0%
Lynch Electric & Sons Inc.	1,871	168	9%	595	168	28%
Lynn Safety, Inc.	83	0	0%	0	0	0%

Local Hiring By Contractor – All Covered Projects

Contractor	Total Hours			Apprentice Hours		
	Total	Local	Local %	Total	Local	Local %
M & R Painting, Inc.	536	0	0%	0	0	0%
M Squared Construction Inc	19,071	11,991	63%	0	0	0%
M. Hernandez Construction, Inc.	2,798	1,966	70%	222	222	100%
Mach 8 Biological Consulting, Inc.	5,044	3,805	75%	458	458	100%
Madden Plumbing, LLC	290	93	32%	0	0	0%
MAG Trucking, Inc	14	0	0%	0	0	0%
Magnum Drywall	38	0	0%	0	0	0%
Maguire, Inc dba LaHue and Associates	319	173	54%	0	0	0%
Majestic Construction	1,676	1,019	61%	334	334	100%
Malcolm Drilling Company, Inc.	111,922	23,339	21%	5,444	5,164	95%
Malcolm International LLC	488	0	0%	0	0	0%
Mammoet USA South, Inc.	241	0	0%	0	0	0%
Mansfield & Mansfield Construction Clean-Up Co. Site Support	1,885	1,302	69%	1,561	1,302	83%
Marble West	64	64	100%	0	0	0%
Marelich Mechanical	7,439	1,319	18%	2,913	841	29%
MARINA LANDSCAPE, INC.	1,501	483	32%	38	0	0%
MARINA MECHANICAL	35	0	0%	0	0	0%
Marinship Development Interest LLC	49,400	28,203	57%	3,782	3,710	98%
MARK OLSON ELECTRIC, INC.	8	0	0%	0	0	0%
MARTIN M. RON ASSOC. INC.	1,034	314	30%	51	5	10%
Master Painting & Decorating LLC	390	390	100%	0	0	0%
Maxim Crane Works, L.P.	2,081	976	47%	72	0	0%
MBS Engineering	38	0	0%	0	0	0%
MC Metal Inc	86	86	100%	0	0	0%
MC Metal Inc.	300	269	90%	0	0	0%

Local Hiring By Contractor – All Covered Projects

Contractor	Total Hours			Apprentice Hours		
	Total	Local	Local %	Total	Local	Local %
Mccarthy Building Companies, Inc	4,909	394	8%	386	386	100%
Mcclure Electric, Inc.	943	268	28%	123	123	100%
Mcd Trucking LLC	926	0	0%	0	0	0%
Mcgoldrick Enterprises DBA MTB	66	0	0%	22	0	0%
Mckee And Company Electric	1,330	0	0%	39	0	0%
Mckee Electric	1,288	882	68%	252	252	100%
Mcmillan Data Communications, Inc.	1,800	0	0%	0	0	0%
Mcmillan Electric	9,546	1,737	18%	1,066	293	27%
Mdb Interiors, Inc	1,019	24	2%	163	0	0%
Mesa3	271	0	0%	7	0	0%
Metalset, Inc.	556	40	7%	118	0	0%
Metropolitan Electrical Construction, Inc.	48	16	33%	0	0	0%
Mgc Inc DBA Mission Glass Company	12	0	0%	6	0	0%
Michael O'shaughnessy Construction, Inc.	6,061	3,323	55%	287	287	100%
Michels Corporation-Tunneling Division	40,758	30,890	76%	6,568	5,500	84%
Microbiz Security Company	52	28	54%	0	0	0%
Mik Construction, Inc.	46	0	0%	0	0	0%
Mike O'dell Surveys	6,489	332	5%	2,914	281	10%
Miller Dobbins Family, Inc. DBA Climate Pro	5	0	0%	0	0	0%
Miller Paneling Specialties	561	48	9%	308	48	16%
Minerva Construction	514	157	31%	141	141	100%
Mitchell Engineering	31,156	9,834	32%	2,171	2,167	100%
Mocon Corporation	179	0	0%	0	0	0%
Monterey Mechanical Co.	13,235	5,173	39%	2,875	2,322	81%
Monticelli Painting And Decorating, Inc.	384	0	0%	48	0	0%

Local Hiring By Contractor – All Covered Projects

Contractor	Total Hours			Apprentice Hours		
	Total	Local	Local %	Total	Local	Local %
Morrow Equipment Company	169	0	0%	0	0	0%
Mountain Methods, Inc.	16	16	100%	0	0	0%
Murano Shades Inc	118	0	0%	0	0	0%
Mwh Webcor Joint Venture	21,359	8,400	39%	2,254	288	13%
N C Flooring Group, Inc.	87	0	0%	87	0	0%
N.m.n Construction, Inc.	470	0	0%	0	0	0%
Naman Trucking, Inc.	5	0	0%	0	0	0%
National Air Balance Company Inc	533	0	0%	283	0	0%
National Coating & Lining Co.	4,833	2,821	58%	1,013	687	68%
National Plant Services Incorporated	140	0	0%	0	0	0%
Nationwide Shotcrete	36	0	0%	0	0	0%
Nationwide Shotcrete Inc.	604	288	48%	16	0	0%
Neary Landscape, Inc.	917	197	21%	112	0	0%
Netronix Integration Inc	590	0	0%	0	0	0%
Nevell Group Inc.	45,235	6,402	14%	10,719	2,896	27%
Nibbi Bros Associates, Inc. DBA Nibbi Concrete	1,502	354	24%	378	0	0%
Nibbi Brothers Associates, Inc.	1,770	1,282	72%	149	149	100%
Njirich & Sons, Inc	16	16	100%	8	8	100%
Nmi Industrial Holdings, Inc.	9,730	0	0%	2,026	0	0%
Nor Cal Pipeline Services	3,595	64	2%	48	0	0%
Nor-Cal Scaffolding, Inc	146	0	0%	53	0	0%
North American Fence & Railing Inc	504	39	8%	0	0	0%
North Bay Trans Inc.	6	0	0%	0	0	0%
Northern Directional Drilling, Inc	1,109	0	0%	0	0	0%
Northern Steel, Inc.	69	69	100%	15	15	100%

Local Hiring By Contractor – All Covered Projects

Contractor	Total Hours			Apprentice Hours		
	Total	Local	Local %	Total	Local	Local %
NV Heathorn Company	1,140	350	31%	154	0	0%
O'Brien Mechanical, Inc.	8,133	2,843	35%	3,134	1,426	46%
O'Brien Steel Erectors, Inc.	1,539	0	0%	694	0	0%
OBS Engineering, Inc.	1,350	807	60%	0	0	0%
OC Jones & Sons, Inc.	425	12	3%	0	0	0%
Oliveira Fence, Inc.	17	0	0%	0	0	0%
Olson & Co. Steel	967	249	26%	0	0	0%
Omni Sheet Metal, Inc.	1,875	449	24%	449	449	100%
On The Level Concrete	3,430	1,433	42%	229	229	100%
Onyx Insulation Company	25	0	0%	0	0	0%
Otis Elevator Company - San Francisco	3,934	0	0%	1,883	0	0%
Pacific Auxiliary Fire Alarm	149	0	0%	0	0	0%
Pacific Boring, Inc.	3,603	0	0%	752	0	0%
Pacific Coast Sales & Service, Inc.	519	0	0%	14	0	0%
Pacific Engineering And Construction, Inc.	861	333	39%	0	0	0%
Pacific Erectors, Inc.	1,487	463	31%	715	463	65%
Pacific Power Testing	353	8	2%	0	0	0%
Pacific Sealants	695	0	0%	42	0	0%
Pacific Shores Construction	44	24	55%	0	0	0%
Pacific States Environmental Contractors	4,406	795	18%	68	8	12%
Pacific Steel Group (Psg)	24,413	2,297	9%	8,570	1,862	22%
Pacific Structures, Inc.	8,882	2,137	24%	1,796	1,065	59%
Pacific Test And Balance, Inc.	50	0	0%	14	0	0%
Paganini Electric Corporation	501	494	99%	0	0	0%
Parc Environmental	238	0	0%	0	0	0%

Local Hiring By Contractor – All Covered Projects

Contractor	Total Hours			Apprentice Hours		
	Total	Local	Local %	Total	Local	Local %
Partition Specialties, Inc.	191	0	0%	46	0	0%
Paulhus Millwork Installation	20	0	0%	0	0	0%
Penhall Company	1,232	0	0%	0	0	0%
Penhall Company - San Leandro	444	85	19%	0	0	0%
Peninsulators	122	0	0%	16	0	0%
Performance Caulking	1,346	615	46%	240	0	0%
Performance Contracting Inc.	6,716	52	1%	1,879	52	3%
Performance Contracting Inc.	4,619	783	17%	1,605	783	49%
Performance Mechanical	35	0	0%	0	0	0%
Performance Swing Stage, Inc.	103	0	0%	0	0	0%
Philip Bettney Trucking, Inc.	524	524	100%	0	0	0%
Phoenix Electric Company	35,673	12,815	36%	6,428	3,303	51%
Picture Painting & Decorating	239	223	93%	16	0	0%
Pilot Construction Management Inc.	174	61	35%	0	0	0%
Pioneer Contractors, Inc.	7,578	2,692	36%	3,157	1,565	50%
Pipe And Plant Solutions, Inc.	1,893	250	13%	0	0	0%
Pitcher Services, LLC	921	190	21%	190	190	100%
Plant Construction Company, Lp	42,702	10,484	25%	5,101	1,734	34%
Platinum Scaffolding Services, Inc.	291	0	0%	61	0	0%
Platinum Specialty Services, Inc.	467	0	0%	10	0	0%
Power Construction	48	48	100%	0	0	0%
Power Engineering Contractors, Inc.	6,937	572	8%	484	44	9%
Power Plus	21	0	0%	0	0	0%
Precision Directional Boring Inc.	114	0	0%	0	0	0%
Precision Emprise LLC	5,224	2,810	54%	0	0	0%

Local Hiring By Contractor – All Covered Projects

Contractor	Total Hours			Apprentice Hours		
	Total	Local	Local %	Total	Local	Local %
Precision Engineering, Inc.	48,145	44,697	93%	2,019	2,019	100%
Pribuss Engineering, Inc.	3,067	1,468	48%	856	798	93%
Priority Architectural Graphics	4,314	2,570	60%	737	471	64%
Priority Architectural Graphics, Inc.	7	7	100%	0	0	0%
Pro Spectra Contract Flooring	127	0	0%	70	0	0%
Pro West Wall	4	0	0%	0	0	0%
Professional Asbestos & Lead Services, Inc.	747	269	36%	0	0	0%
Progress Glass Company Inc.	521	5	1%	136	0	0%
Prospectra Contract Flooring - Union City, Ca	1,263	0	0%	178	0	0%
Pullman Sst, Inc.	3,020	461	15%	108	0	0%
Q4 Mechanical Corporation	83	9	11%	0	0	0%
Qa Constructors, Inc.	4,333	0	0%	493	0	0%
QLM, Inc.	7,407	0	0%	278	0	0%
Quartz Systems, Inc.	42	9	21%	0	0	0%
R B Construction Inc.	22,204	3,303	15%	0	0	0%
R G Plumbing Group, Inc.	21	11	50%	11	11	100%
R&I Glassworks	1,729	723	42%	544	476	87%
R&S Construction Management Inc.	36,959	19,271	52%	2,494	1,947	78%
R.P. Coatings, Inc.	1,012	0	0%	56	0	0%
Rab-Com, Limited	4	0	0%	0	0	0%
Radco Construction	92	0	0%	0	0	0%
Radonich Corp DBA Cal Coast Telecom	92	46	50%	0	0	0%
Railpros Field Services, Inc.	450	0	0%	0	0	0%
Rain For Rent	32	0	0%	0	0	0%
Rainbow Waterproofing & Restoration	87	0	0%	0	0	0%

Local Hiring By Contractor – All Covered Projects

Contractor	Total Hours			Apprentice Hours		
	Total	Local	Local %	Total	Local	Local %
Ranch Fence, Inc.	96	61	64%	0	0	0%
Ranger Pipelines, Inc.	15,968	6,198	39%	932	915	98%
Ranis Construction & Electric, Inc.	890	330	37%	221	19	8%
RankerAMG, Inc.	9,830	2,861	29%	3,902	1,626	42%
Rapid Trans LLC	369	0	0%	0	0	0%
RCM Fire Protection, Inc.	5,990	884	15%	2,874	884	31%
Rebar International	1,085	0	0%	81	0	0%
Rebar International, Inc.	145	7	5%	10	0	0%
Rebarber Enterprises	289	167	58%	188	107	57%
Red Dipper Inc.	3,616	810	22%	1,048	733	70%
Red Dipper, Inc.	440	187	43%	187	187	100%
Redstone Plumbing	261	261	100%	0	0	0%
Redwood Electric Group	40,624	11,944	29%	4,135	2,360	57%
Redwood Painting Co., Inc.	1,247	19	2%	338	0	0%
Reed & Graham, Inc.	16	0	0%	0	0	0%
Reliance Engineering Inc.	14,459	0	0%	1,390	0	0%
Repcold Distributors	128	0	0%	0	0	0%
Republic Services - DBA Allied Waste	154	0	0%	0	0	0%
RES Engineers	575	4	1%	226	0	0%
Restec Contractors, Inc.	517	0	0%	182	0	0%
RFJ Meiswinkel Company	42,090	1,583	4%	9,699	0	0%
Richard Hancock, Inc.	15,225	1,957	13%	5,200	1,579	30%
Right Away Ready Mix	48	32	65%	0	0	0%
RK Engineering Inc.	13,224	4,569	35%	2,285	461	20%
RIh Fire Protection	48	0	0%	16	0	0%

Local Hiring By Contractor – All Covered Projects

Contractor	Total Hours			Apprentice Hours		
	Total	Local	Local %	Total	Local	Local %
RMA Group	13,351	2,494	19%	4,541	441	10%
Rmt Landscape Contractors Inc.	474	0	0%	0	0	0%
Roadway Construction Inc.	6,474	925	14%	633	503	79%
Robert A Bothman Inc.	135	14	10%	6	0	0%
Robertson Industries, Inc.	961	0	0%	88	0	0%
Rolling Plains Construction, Inc.	3,112	164	5%	0	0	0%
Ronald R Nelson Contractor Inc.	3,120	1,728	55%	151	151	100%
Ronan Construction, Inc.	4,212	1,102	26%	0	0	0%
Rook Electric	8	0	0%	0	0	0%
Rosendin Electric, Inc.	69,001	21,647	31%	5,357	2,660	50%
RS Analysis, Inc.	12	0	0%	0	0	0%
RT Western, Inc.	2,447	1,286	53%	257	177	69%
Rubecon General Contracting, Inc.	12,432	10,268	83%	2,798	1,531	55%
Rudy's Refrigeration	85	0	0%	85	0	0%
S & R Drywall, Inc.	380	0	0%	22	0	0%
S & S Trucking	2,683	22	1%	0	0	0%
S.J. Amoroso Construction Co., Inc.	13,076	8,986	69%	1,659	1,659	100%
S.J. General Building Maintenance	4,400	0	0%	0	0	0%
Sabah International	48	0	0%	0	0	0%
Safe2core Inc.	53	0	0%	0	0	0%
SAK Construction LLC	86	0	0%	0	0	0%
San Francisco Elevator Services, Inc.	1,565	0	0%	522	0	0%
San Francisco Interiors, Inc.	1,800	744	41%	429	261	61%
San Francisco Millwork, Inc.	4,213	3,388	80%	231	0	0%
San Francisco Power	3,869	2,943	76%	612	612	100%

Local Hiring By Contractor – All Covered Projects

Contractor	Total Hours			Apprentice Hours		
	Total	Local	Local %	Total	Local	Local %
San Francisco Roofing Services, Inc.	1,765	348	20%	611	54	9%
Sandis Civil Engineers Surveyors Planner	847	0	0%	78	0	0%
Scaffold Solutions	1,185	301	25%	502	257	51%
Scaffold Solutions, Inc.	8,365	2,518	30%	3,604	1,952	54%
Schembri Construction Co., Inc.	324	0	0%	0	0	0%
Schwager Davis, Inc.	4	0	0%	0	0	0%
Sdi Global Specialties	14	0	0%	0	0	0%
Security Contractor Services, Inc.	5	0	0%	0	0	0%
Service Metal Products	126	0	0%	29	0	0%
Service Plastering li	26	0	0%	5	0	0%
Service West, Inc.	763	40	5%	0	0	0%
Seton Pacific Construction	523	169	32%	0	0	0%
Seventy Times Seven, Inc. DBA G Seven	20	20	100%	0	0	0%
Sf&S Inc.	2,097	1,069	51%	0	0	0%
Sheedy Drayage Co.	833	168	20%	140	21	15%
Sheet Metal Systems	849	383	45%	0	0	0%
Sidhu G Transportation Inc.	6	0	0%	0	0	0%
Siemens Industry Inc.	48	0	0%	0	0	0%
Sierra Electric Co.	107	0	0%	28	0	0%
Sierra's HD Demolition Inc.	276	0	0%	0	0	0%
Silicon Valley Glass Inc.	789	450	57%	0	0	0%
Silverado Contractors, Inc.	18,638	3,578	19%	63	0	0%
Sinclair General Engineering Construction, Inc.	2,101	1,628	77%	311	287	92%
Skycon Inc.	918	0	0%	0	0	0%
Skyline Scaffold, Inc.	4,903	954	19%	633	379	60%

Local Hiring By Contractor – All Covered Projects

Contractor	Total Hours			Apprentice Hours		
	Total	Local	Local %	Total	Local	Local %
Slater Custom Painting	146	47	32%	35	35	100%
Sme Steel Contractors, Inc.	25,048	6,707	27%	2,337	1,003	43%
Smith & Sons Electric, Inc.	4,186	2,348	56%	853	853	100%
Smoke Guard California, Inc.	760	0	0%	47	0	0%
Southeast Electrical Contractor, Inc.	3,115	2,585	83%	1,044	1,044	100%
Southeast Electrical Contractor, Inc.	1,780	881	49%	74	0	0%
Southland Ind	603	0	0%	46	0	0%
Southland Industries	7,295	5,114	70%	2,581	1,840	71%
Spacetone Accoustics Inc.	24	0	0%	0	0	0%
Specialties, Etc. Corp	129	25	19%	36	0	0%
Spencer Masonry	1,299	0	0%	158	0	0%
St Francis Electric Inc.	1,709	214	13%	93	44	47%
Stacy L. Silva Construction	8	0	0%	0	0	0%
Standard Drywall, Inc.	26,604	6,700	25%	6,345	3,867	61%
Star Elevator, Inc.	40	0	0%	0	0	0%
Sterling Environmental	4,469	867	19%	0	0	0%
Stockham Construction, Inc.	48	0	0%	16	0	0%
Stomper Company Inc.	13,545	4,986	37%	2,183	1,477	68%
Streamline Drywall Inc.	2,348	1,122	48%	0	0	0%
Street Sweeper Co	272	0	0%	0	0	0%
Striping Graphics	240	90	38%	90	90	100%
Stuart Dean	64	64	100%	0	0	0%
Stumbaugh & Associates, Inc.	29	0	0%	6	0	0%
Subterra Construction, Inc.	461	0	0%	0	0	0%
Subtronic Corporation	11	0	0%	0	0	0%

Local Hiring By Contractor – All Covered Projects

Contractor	Total Hours			Apprentice Hours		
	Total	Local	Local %	Total	Local	Local %
Sullivan Construction Co Inc.	1,245	568	46%	181	0	0%
Sullivan's Concrete Sawing	240	0	0%	0	0	0%
Summit Steel Works Corp	167	0	0%	0	0	0%
Sun Light & Power	108	0	0%	0	0	0%
Superior Automatic Sprinkler Co	178	8	4%	23	8	35%
Superior Coring & Cutting Inc.	407	348	85%	0	0	0%
Superior Electric Inc.	131	0	0%	0	0	0%
Svala Construction Inc.	24	24	100%	0	0	0%
Swinerton Builders - Northern CA	12,198	3,046	25%	2,282	999	44%
Systems Mechanical	325	0	0%	0	0	0%
T L K Steel Incorporated	77	61	79%	34	26	76%
Taft Electric Company	98	0	0%	0	0	0%
Team Ees Inc.	15	4	27%	7	0	0%
Team North Construction Services	828	60	7%	0	0	0%
Team North Construction Services Inc.	921	921	100%	0	0	0%
Telamon Engineering Consultants	16	0	0%	0	0	0%
Temper Insulation Co., Inc.	5,098	1,535	30%	763	28	4%
Thameside Masonry	908	0	0%	0	0	0%
The Colores Painting Co Inc.	80	40	50%	0	0	0%
The Door Crew, Inc.	143	75	52%	75	75	100%
The Herrick Corporation	124	28	23%	0	0	0%
The Professional Tree Care Company	2,481	416	17%	4	0	0%
The Smith Company, Inc.	28	0	0%	14	0	0%
The Smith Company, Inc.	50	0	0%	18	0	0%
Thomas-Swan Sign Co., Inc.	8	0	0%	0	0	0%

Local Hiring By Contractor – All Covered Projects

Contractor	Total Hours			Apprentice Hours		
	Total	Local	Local %	Total	Local	Local %
Thyssenkrupp Elevator	14,089	2,248	16%	6,091	2,187	36%
Tidal Marine Construction	120	0	0%	0	0	0%
Tile West, Inc.	60	0	0%	14	0	0%
Titan Crane & Rigging, Inc.	922	0	0%	321	0	0%
Titan Services, Inc.	104	0	0%	0	0	0%
Tom's Metal Specialists, Inc.	16	8	50%	0	0	0%
Total Traffic Control, Inc.	18,767	8,942	48%	5,891	2,832	48%
TP Windows, Inc. DBA SF Window Factory	1,849	1,047	57%	456	24	5%
Traceair Technologies, Inc.	4	0	0%	0	0	0%
Transamerican Engineers	96	84	88%	0	0	0%
Transamerican Engineers & Associates	310	310	100%	0	0	0%
Transbay Fire Protection, Inc.	4,853	0	0%	392	0	0%
Transpacific Steel, LLC	18,602	3,347	18%	4,838	2,062	43%
Treaty Construction	2,184	2,184	100%	0	0	0%
Trico Construction	609	298	49%	0	0	0%
Tri-County Sanblasting, Inc.	546	0	0%	0	0	0%
Trident Installations	7	0	0%	0	0	0%
Trinet Construction Inc.	9,142	5,311	58%	1,330	1,330	100%
Trm Corporation DBA Superior Tile & Stone	48	0	0%	20	0	0%
Tryco Electric, Inc.	88	0	0%	0	0	0%
Turtle Hill Inc.	40	40	100%	0	0	0%
Twining, Inc.	37	0	0%	0	0	0%
U.S. Electric Technologies, Inc.	5,353	2,826	53%	0	0	0%
U.S. Perma, Inc. DBA California Tile Installers	8,288	580	7%	1,764	91	5%
UMO Steel Inc.	3,552	126	4%	1,498	126	8%

Local Hiring By Contractor – All Covered Projects

Contractor	Total Hours			Apprentice Hours		
	Total	Local	Local %	Total	Local	Local %
Union Rolling Door Company	109	13	11%	17	13	76%
Unique Elevator Interiors Inc.	27	0	0%	0	0	0%
Unistrut International Corp.	42	0	0%	0	0	0%
United California Glass & Door	23	11	50%	0	0	0%
United Mechanical, Inc.	4,243	1,031	24%	1,980	947	48%
United Site Services Of California	3	0	0%	0	0	0%
Us Glass & Aluminum	1,485	392	26%	580	392	68%
Usa Hoist	614	62	10%	97	0	0%
Valdez Painting	9,005	2,588	29%	2,209	626	28%
Valley Waterproofing, Inc.	772	0	0%	56	0	0%
Value Fire Protection, Inc.	1,997	414	21%	992	398	40%
Victory Woodwards, Inc.	1,134	251	22%	191	171	90%
Viking Drillers, Inc.	38	0	0%	0	0	0%
Volk Electric, Inc.	110	49	45%	21	21	100%
W.c. Maloney, Inc.	5,799	1,581	27%	1,320	785	59%
W.I .Hickey Sons, Inc.	14,520	2,034	14%	2,117	7	0%
Walker Telecomm, Inc.	814	0	0%	324	0	0%
Walsh Construction Company li LLC	68,274	22,984	34%	9,842	2,835	29%
Wang Technology	14	4	25%	0	0	0%
Waterproofing Associates, Inc.	223	65	29%	90	0	0%
Watertight Restoration Inc.	843	731	87%	0	0	0%
Waterworks Industries, Inc.	48	0	0%	0	0	0%
Wayne E. Swisher Cement Contractor, Inc.	16	0	0%	0	0	0%
Webcor Builders	13,763	3,187	23%	190	71	37%
Webcor Concrete Group	769	0	0%	0	0	0%

Local Hiring By Contractor – All Covered Projects

Contractor	Total Hours			Apprentice Hours		
	Total	Local	Local %	Total	Local	Local %
Webcor Concrete, A Division Of Webcor Craft, L.P.	83,446	9,541	11%	11,081	5,506	50%
Weiss Sheet Metal Company	291	28	9%	63	3	4%
West Coast Arborists, Inc.	5,252	1,157	22%	0	0	0%
West Coast Asm	10	0	0%	0	0	0%
West Coast Mechanical Insulation, Inc.	258	119	46%	0	0	0%
Westech Roofing, Inc	16	0	0%	0	0	0%
Western Erectors Inc.	503	0	0%	32	0	0%
Western Pacific Mobile Services Inc.	296	0	0%	0	0	0%
Western Roofing Service	775	257	33%	122	81	67%
Western Water Constructors, Inc.	10,871	2,394	22%	1,940	1,361	70%
Western Water Features, Inc.	1,752	606	35%	215	0	0%
Wickman Development And Construction	3,239	2,088	64%	266	66	25%
Wpcs International-Suisun City, Inc.	1,130	0	0%	48	0	0%
Yadejs, Inc.	7,504	7,504	100%	0	0	0%
Yerba Buena Engineering & Construction, Inc.	5,173	3,413	66%	623	404	65%
Yolanda's Construction Management And Traffic Control	7,237	6,711	93%	0	0	0%
Young Electric Co.	784	280	36%	95	0	0%
Yum's Mechanical Co., Inc.	129	52	40%	20	0	0%
Grand Total	3,273,500	1,033,692	32%	478,211	223,069	47%

Worker Demographics By Locality

San Francisco Workers By Zip Code

Zip Code	Asian / Pacific Islander	Black	Latinx	Native American / Alaskan	White	Other	Not Specified	Male	Female	Total
94102	12	3	5	11		10	1		42	42
94103	9	6	1	34	1	22		4	69	73
94104		1				1			2	2
94105	1	2		1		3	1	1	7	8
94107	15	3	9	11		10	1	8	41	49
94108		2	3	4		1			10	10
94109	1	3	10	15	1	6	2	2	36	38
94110	9	12	37	187		52	4	10	291	301
94111		1	2				2		5	5
94112	13	53	34	157		67	9	12	321	333
94114			9	8		6			23	23
94115	17	2	6	9		20	4	11	47	58
94116	1	19	43	7		18	5	10	83	93
94117	5		10	8		6		1	28	29
94118	1	2	10	19		2	2	1	35	36
94119						2			2	2
94121	2	8	16	13	1	13	3	1	55	56

Worker Demographics By Locality

San Francisco Workers By Zip Code

Zip Code	Asian / Pacific Islander	Black	Latinx	Native American / Alaskan	White	Other	Not Specified	Male	Female	Total
94122	2	13	24	39	1	13	3	2	93	95
94123			1	2					3	3
94124	128	21	28	135	2	104	16	46	388	434
94127	4	3	12	4		3		3	23	26
94130	4		6	1		3		1	13	14
94131	3	1	9	19		5		1	36	37
94132	10	7	14	17		15	1	2	62	64
94133	3	11		2		8			24	24
94134	21	44	21	61		27	4	5	173	178
94140						1			1	1
94141				3	1	1			5	5
94142				1					1	1
94158	2		1	1		3	1	2	6	8
94164						1			1	1
94188	2					2			4	4
TOTAL	265	217	311	769	7	425	59	123	1930	2053

Worker Demographics By Locality

All Workers By County of Residence

County	Asian / Pacific Islander	Black	Latinx	Native American / Alaskan	White	Other	Not Specified	Male	Female	Total
Alameda	100	66	1,104	4	257	90	359	1,940	40	1,980
Contra Costa County	32	54	743	8	392	48	350	1,608	19	1,627
Marin County	4	2	50	1	75	6	47	183	2	185
San Francisco	217	265	769	7	311	59	425	1,930	123	2,053
San Mateo County	59	12	342	1	229	44	222	887	22	909
Santa Clara County	24	7	741	1	145	29	222	1,152	17	1,169
Solano County	16	32	301	2	214	27	161	742	11	753
Sonoma County	4	5	87	2	154	6	77	333	2	335
Other CA	542	561	7,001	42	3,497	455	3,279	15,037	340	15,377
TOTAL	998	1,004	11,138	68	5,274	768	5,142	23,812	576	24,388

Worker Demographics By Locality

All Workers By State of Residence

Zip Code	Asian / Pacific Islander	Black	Latinx	Native American / Alaskan	White	Other	Not Specified	Male	Female	Total
AZ			7	1		1	2	14		14
CA	499	502	5,569	34	1	381	2,571	11,906	288	12,194
CO			4					14		14
FL			2				4	5	2	7
GA		2					3	6		6
HI			1					2		2
ID					1		2	5		5
IL							1	1		1
IN							1	1		1
MA							1	1		1
MO							1	4		4
MS							2	4	1	5
MT								3		3
NC							1	2		2
ND							2	3		3
NM			4				1	6		6
NV	2	1	4				12	39	1	40
NY							1	1		1
OK							1	1		1
OR							2	12		12
SC			1					1		1
TN							2	2		2
TX			2					9		9
UT			1				1	9		9
WA		1					1	12		12
Grand Total	2	4	26	1		1	41	157	4	161

ACKNOWLEDGMENTS

These are the organizations and individuals that allow the Local Hire Policy for Construction to thrive and continue to be an internationally-recognized model for creating opportunities and careers for residents through local projects.

In an ongoing effort to enhance the CityBuild Academy curriculum, CityBuild has cultivated partnerships with various trade union apprenticeship programs.

THANK YOU

PARTNERSHIPS

City College of San Francisco

Bay Area Plastering Industry Joint Apprenticeship Training Committee

Cement Mason Pre-Apprenticeship Training Program

Insulators Local 16

IBEW Local 6 San Francisco Joint Apprenticeship and Training Committee

International Union of Elevator Constructors Local 8

Ironworkers Local 377

Nor Cal Carpenters Union

North America's Building Trades Unions

Northern California Laborers' Training Center

Operating Engineers Local 3

Painters and Allied Trades District Council 16

San Francisco Building and Construction Trades Council

Sheet Metal Workers' Local 104

UA Local 38 Joint Apprenticeship and Training Committee



**THE OFFICE OF MAYOR LONDON N. BREED
SAN FRANCISCO BOARD OF SUPERVISORS**

Connie Chan, District 1
Catherine Stefani, District 2
Aaron Peskin, District 3
Gordon Mar, District 4
Dean Preston, District 5
Matt Haney, District 6
Myrna Melgar, District 7
Rafael Mandelman, District 8
Hillary Ronen, District 9
Shamann Walton, Board President, District 10
Ahsha Safaí, District 11

**THE OFFICE OF ECONOMIC AND WORKFORCE DEVELOPMENT WOULD
LIKE TO THANK OUR PARTNERS FOR THEIR CONTINUED SUPPORT**

CITY & COUNTY OF SAN FRANCISCO CITY AGENCIES

Office of the City Administrator
Office of the City Attorney
Office of Community Investment and Infrastructure
Office of the Controller
Port of San Francisco
San Francisco Adult Probation Department
San Francisco Department of the Environment
San Francisco Human Rights Commission
San Francisco International Airport
San Francisco Municipal Transportation Agency
San Francisco Public Defender's Office
San Francisco Public Utilities Commission
San Francisco Public Works
San Francisco Recreation and Parks
San Francisco Sheriff's Office

“

**Alone we can do so
little. Together we
can do so much.**

”

LABOR ORGANIZATIONS

Bricklayers, Tilesetters and Allied Craftworkers Local 3

Carpenters Local 22 Cement Masons Local 300

Drywall Lathers Local 68L

International Brotherhood of Electrical Workers Local 6

IATSE Local 16

IFTPE Local 21

International Union of Elevator Constructors Local 8

International Union of Painters and Allied Trades District Council 16

Ironworkers Local 377

LiUNA! Laborers' Local 261

LiUNA! Laborers' Local 67

Nor Cal Carpenters Union

North America's Building Trades Unions

Northern California District Council of Laborers

Operating Engineers Local 3

Pile Drivers Local 34

Plasterers and Shophands Union Local 66

Teamsters Local 665

Roofers and Waterproofers Local 40

San Francisco Building and Construction Trades Council

San Francisco Labor Council

SEIU-USWW

Sign and Display Local 510

Sheet Metal Workers' Local 104

UNITE HERE Local 2

United Association Local 38, Plumbers & Pipefitters

CONTRACTOR ASSOCIATIONS

Associated General Contractors

Construction Employers' Association

United Contractors

Wall and Ceiling Alliance



COMMUNITY PARTNERS

Aboriginal Blackman United
A. Philip Randolph Institute
Anders and Anders Foundation
Brightline Defense Project
Charity Cultural Services Center
Chinese for Affirmative Action
Emerald Cities Collaborative
Five Keys Schools and Programs
Inner City Youth
Mission Hiring Hall
One Treasure Island
San Francisco Giants/Mission Rock Partners
Success Center of San Francisco
University of California, San Francisco
Young Community Developers, Inc.

OFFICE OF ECONOMIC AND WORKFORCE DEVELOPMENT

Kate Sofis, Executive Director
Joshua Arce, Director of Workforce Development
Ken Nim, Director of CityBuild
Chris Vergara, CityBuild Compliance Manager
Joyce Wong, Annual Report Project Manager
Gloria Chan, Director of Communications
Benson Tran, Graphic Designer



SAN FRANCISCO
OFFICE OF ECONOMIC &
WORKFORCE DEVELOPMENT

oewd.org

